

Laboratory Surveillance Report

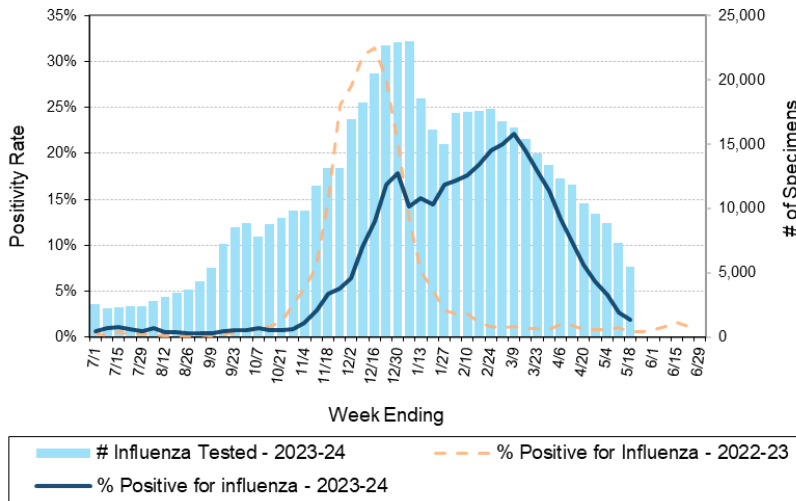
** For a selection of pathogens, participating Wisconsin clinical laboratories voluntarily report to WSLH on a weekly basis the total number of tests performed, and the number of those tests with positive results.

To enhance surveillance activities, and monitor for avian influenza, each week please send:

- **PCR/Molecular Testing sites:**
 - ◇ **All influenza positive specimens**
 - ◇ Especially, Influenza A specimens:
 - That fail to subtype (Ct <35)
 - **With swine, bovine or avian exposure**
 - With international travel history
- **All Testing Sites:**
 - ◇ **Up to 5** SARS-CoV-2 positive specimens



Number Tested and Positivity Rate for **Influenza** by PCR at Wisconsin Laboratories



Respiratory Snapshot:

- Influenza activity is **decreasing** in Wisconsin (1.9%) and nationally (2.0%).
 - **Influenza A** is the dominant strain circulating (63.2%)
 - **H3** is the dominant Influenza A subtype circulating (60.5%).
- Rhino/Enterovirus (22.2%), Parainfluenza (12.3%) and hMPV (7.2%) activities are **high** in Wisconsin.

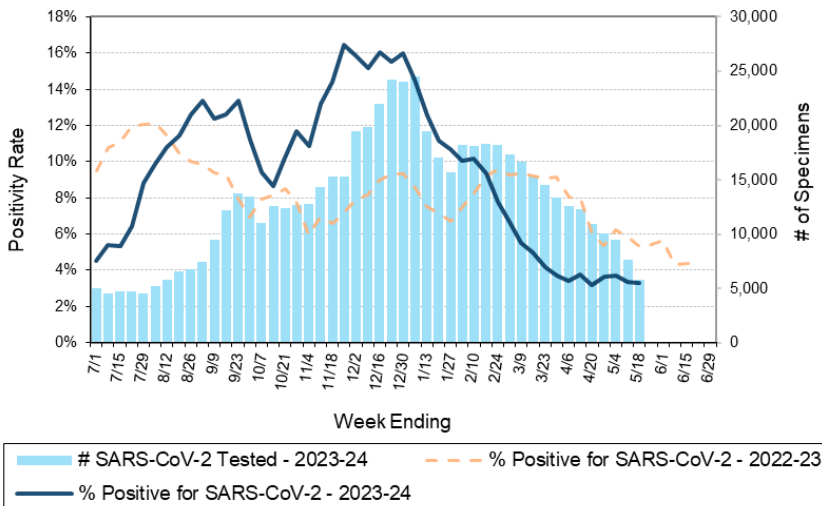
Enteric Snapshot:

- Norovirus activity is **decreasing** (7.3%) in Wisconsin.

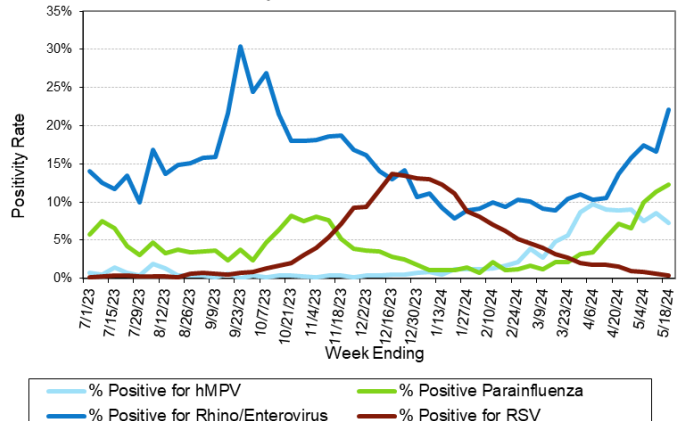
Other:

- Group A Streptococcus activity in Wisconsin is **high** (25%).

Number Tested and Positivity Rate for **SARS-CoV-2** by PCR at Wisconsin Laboratories



Positivity Rate of **hMPV, Parainfluenza, Rhino/Enterovirus and RSV** by PCR at Wisconsin Laboratories



Laboratory Surveillance Report

Enteric Pathogens

Week Ending 5/18/24

	# Tested	% Positive
Norovirus***	468	7.3%
Rotavirus	467	4.5%
<i>Campylobacter</i>	566	3.6%
<i>Salmonella</i>	566	2.0%
Sapovirus	425	1.6%
<i>Cryptosporidium</i>	505	1.6%
Astrovirus	425	1.4%
STEC	566	0.7%
Adenovirus 40/41	425	0.7%
<i>Giardia</i>	505	0.6%
<i>Yersinia enterocolitica</i>	501	0.4%
<i>Plesiomonas shigelloides</i>	459	0.2%
<i>Vibrio</i>	488	0.2%
<i>Aeromonas</i>	57	0.0%
<i>E. coli</i> 0157	256	0.0%
<i>Shigella</i> /EIEC	513	0.0%
<i>Cyclospora</i>	438	0.0%
<i>Entamoeba histolytica</i>	492	0.0%

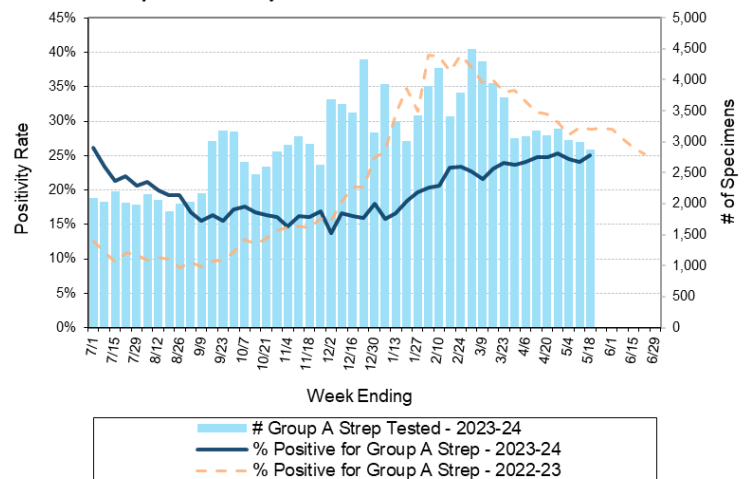
***BioMerieux has announced an increased risk of false positive norovirus results with the BioFire FilmArray GI panel, which may increase the statewide norovirus percent positivity ***

Respiratory Pathogens

Week Ending 5/18/24

	# Tested	% Positive
Rhinovirus/Enterovirus	934	22.2%
Parainfluenza	665	12.3%
Human metapneumovirus	664	7.2%
SARS-CoV-2	5788	3.3%
Adenovirus	651	3.1%
Influenza	5427	1.9%
Seasonal coronaviruses	576	1.6%
RSV	4713	0.4%
<i>Bordetella pertussis</i>	486	0.0%

Number Tested and Positivity Rate for **Group A Streptococcus** by PCR at Wisconsin Laboratories



Additional Information

- Additional information on respiratory pathogens can be found on the DHS website: <https://www.dhs.wisconsin.gov/disease/respiratory.htm>
- The WSLH SARS-CoV-2 genomic dashboard is available here: <https://dataportal.slh.wisc.edu/sc2dashboard>
- The influenza, RSV and respiratory virus activity graphs can be viewed here: <http://www.slh.wisc.edu/wcln-surveillance/surveillance/virology-surveillance/>
- The bacterial, viral and parasitic activity graphs can be viewed here: <http://www.slh.wisc.edu/wcln-surveillance/surveillance/gastropathogen-surveillance/>

To subscribe to this report, email WCLN@slh.wisc.edu