

# Laboratory Surveillance Report

**\*\* For a selection of pathogens, participating Wisconsin clinical laboratories voluntarily report to WSLH on a weekly basis the total number of tests performed, and the number of those tests with positive results.**

**To enhance surveillance activities, and monitor for avian influenza, each week please send:**

- **PCR/Molecular Testing sites:**
  - ◊ **All influenza positive specimens**
  - ◊ Especially, Influenza A specimens:
    - That fail to subtype (Ct <35)
    - **With swine, bovine or avian exposure**
    - With international travel history
- **All Testing Sites:**
  - ◊ **Up to 5** SARS-CoV-2 positive specimens

**Respiratory Snapshot:**

- Influenza activity is **decreasing** in Wisconsin (1.0%) and nationally (1.8%).
  - **Influenza A** is the dominant strain circulating (74%)
  - **H3** is the dominant Influenza A subtype circulating (58%).
- **Rhino/Enterovirus (18.9%)** and **parainfluenza virus (12.2%)** activities are **high** in Wisconsin.

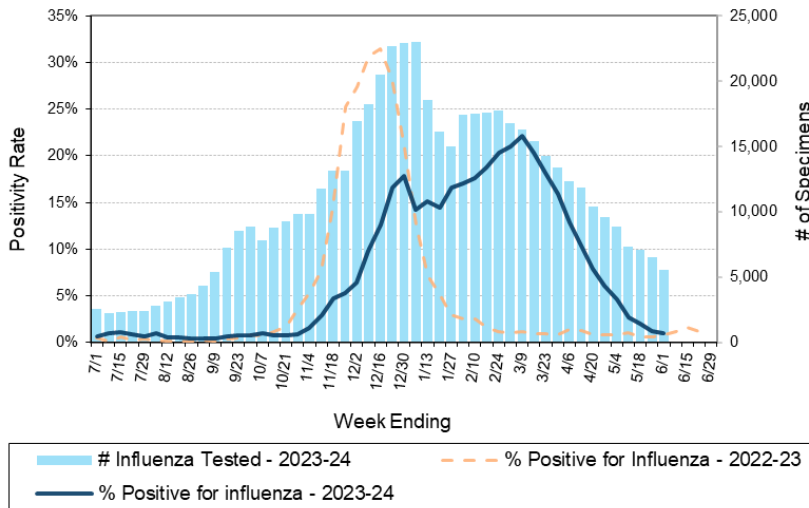
**Enteric Snapshot:**

- **Norovirus activity is high (12.3%)** in Wisconsin.

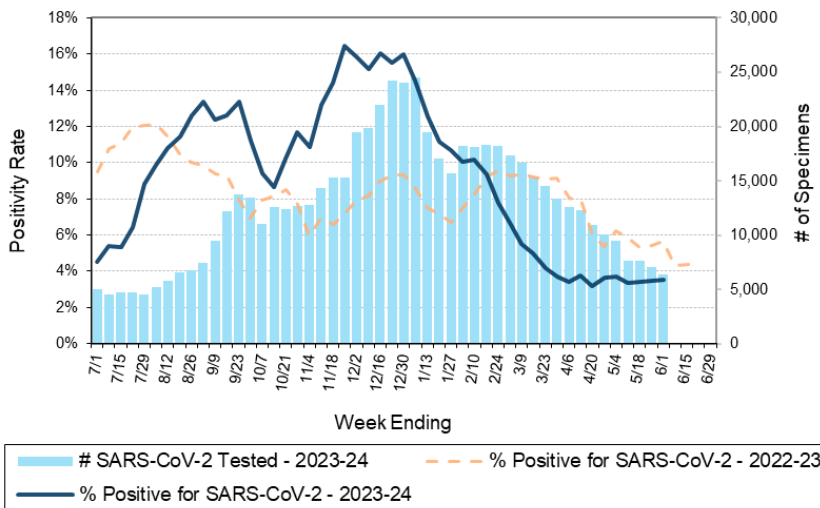
**Other:**

- **Group A Streptococcus activity in Wisconsin is high (26.1%).**

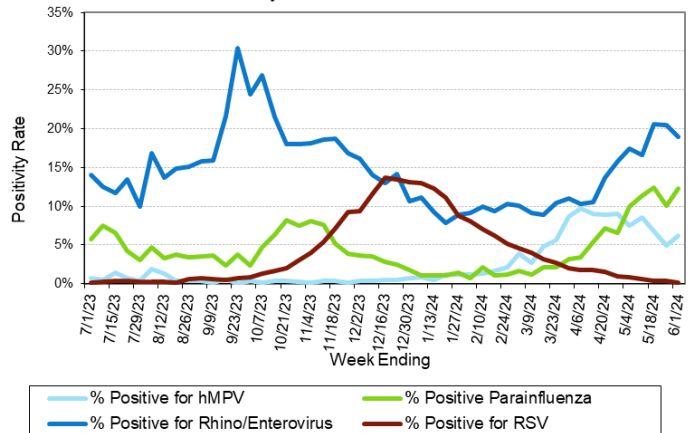
Number Tested and Positivity Rate for **Influenza** by PCR at Wisconsin Laboratories



Number Tested and Positivity Rate for **SARS-CoV-2** by PCR at Wisconsin Laboratories



Positivity Rate of **hMPV, Parainfluenza, Rhino/Enterovirus and RSV** by PCR at Wisconsin Laboratories



# Laboratory Surveillance Report

## Enteric Pathogens

Week Ending 6/1/24

	# Tested	% Positive
Norovirus***	588	8.3%
Rotavirus	587	3.7%
Astrovirus	510	2.0%
<i>Campylobacter</i>	689	1.9%
Adenovirus 40/41	510	1.6%
<i>Salmonella</i>	689	1.2%
<i>Giardia</i>	592	1.2%
Sapovirus	510	1.0%
<i>E. coli</i> 0157	285	0.7%
STEC	689	0.7%
<i>Shigella</i> /EIEC	679	0.7%
<i>Yersinia enterocolitica</i>	623	0.5%
<i>Cryptosporidium</i>	592	0.5%
<i>Plesiomonas shigelloides</i>	546	0.4%
<i>Vibrio</i>	604	0.2%
<i>Aeromonas</i>	56	0.0%
<i>Cyclospora</i>	529	0.0%
<i>Entamoeba histolytica</i>	573	0.0%

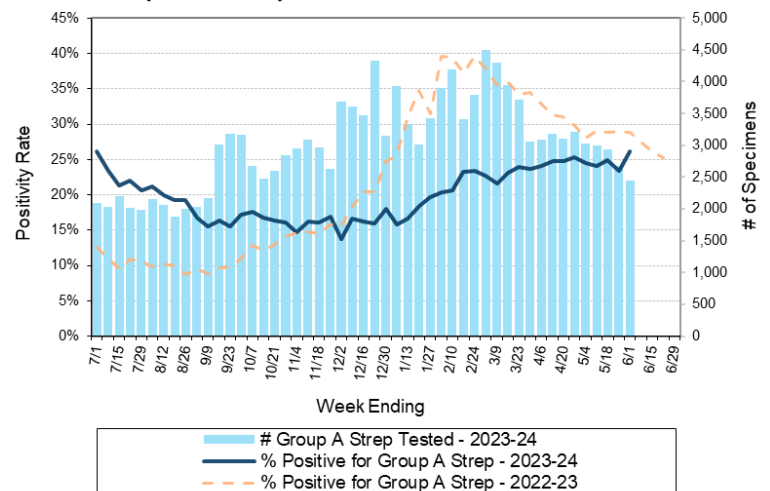
\*\*\*BioMerieux has announced an increased risk of false positive norovirus results with the BioFire FilmArray GI panel, which may increase the statewide norovirus percent positivity \*\*\*

## Respiratory Pathogens

Week Ending 6/1/24

	# Tested	% Positive
Rhinovirus/Enterovirus	1365	18.9%
Parainfluenza	1054	12.2%
Human metapneumovirus	1052	6.2%
SARS-CoV-2	6320	3.5%
Adenovirus	1055	1.9%
Seasonal coronaviruses	941	1.1%
Influenza	5545	1.0%
<i>Bordetella pertussis</i>	747	0.7%
RSV	4857	0.2%

Number Tested and Positivity Rate for Group A *Streptococcus* by PCR at Wisconsin Laboratories



## Additional Information

- Additional information on respiratory pathogens can be found on the DHS website: <https://www.dhs.wisconsin.gov/disease/respiratory.htm>
- The WSLH SARS-CoV-2 genomic dashboard is available here: <https://dataportal.slh.wisc.edu/sc2dashboard>
- The influenza, RSV and respiratory virus activity graphs can be viewed here: <http://www.slh.wisc.edu/wcln-surveillance/surveillance/virology-surveillance/>
- The bacterial, viral and parasitic activity graphs can be viewed here: <http://www.slh.wisc.edu/wcln-surveillance/surveillance/gastropathogen-surveillance/>

To subscribe to this report, email [WCLN@slh.wisc.edu](mailto:WCLN@slh.wisc.edu)