

# Laboratory Surveillance Report

\*\* For a selection of pathogens, participating Wisconsin clinical laboratories voluntarily report to WSLH on a weekly basis the total number of tests performed, and the number of those tests with positive results.

## To enhance surveillance activities, and monitor for avian influenza, each week please send:

- **PCR/Molecular Testing sites:**
  - ◇ **All influenza positive specimens**
  - ◇ Especially, Influenza A specimens:
    - That fail to subtype (Ct <35)
    - **With swine, bovine or avian exposure**
    - With international travel history
- **All Testing Sites:**
  - ◇ **Up to 5** SARS-CoV-2 positive specimens

## Respiratory Snapshot:

- Influenza activity is **low** in Wisconsin (1.2%) and nationally (1.4%).
  - **Influenza A** is the dominant strain circulating (78.1%)
- Rhino/Enterovirus (17.2%) and parainfluenza virus (10.1%) activities are **high** in Wisconsin.
- Bordetella pertussis activity is **increasing** (2.2%)

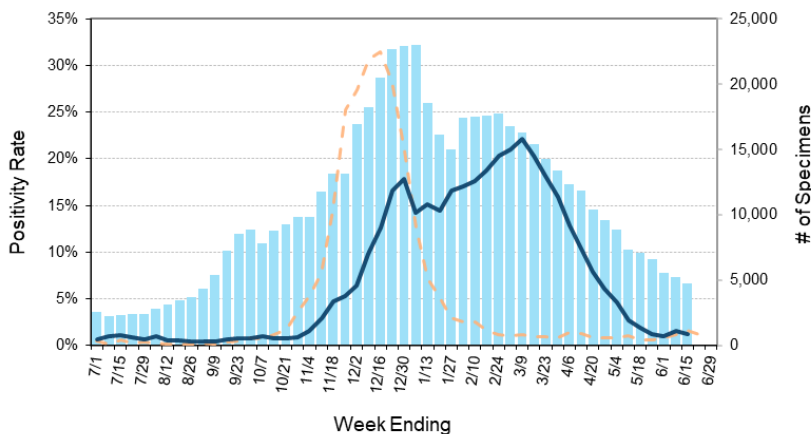
## Enteric Snapshot:

- Norovirus activity is **decreasing** (9.1%) in Wisconsin.

## Other:

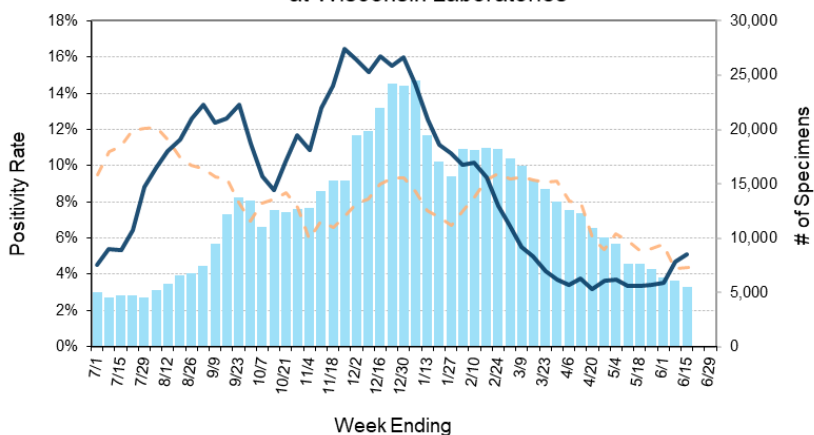
- Group A Streptococcus activity in Wisconsin is **decreasing** (22.9%).

Number Tested and Positivity Rate for **Influenza** by PCR at Wisconsin Laboratories



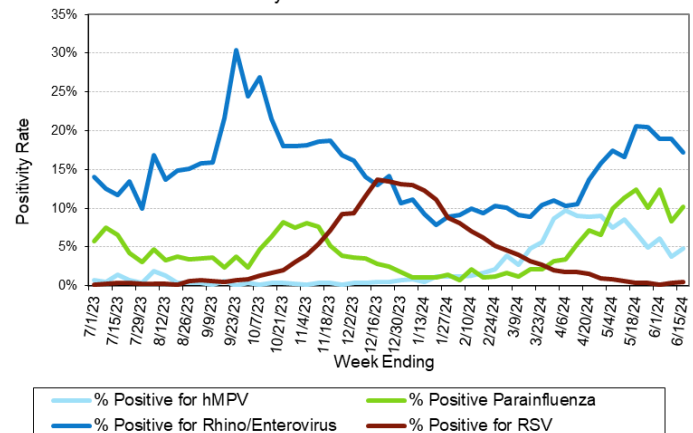
# Influenza Tested - 2023-24      % Positive for Influenza - 2022-23  
% Positive for influenza - 2023-24

Number Tested and Positivity Rate for **SARS-CoV-2** by PCR at Wisconsin Laboratories



# SARS-CoV-2 Tested - 2023-24      % Positive for SARS-CoV-2 - 2022-23  
% Positive for SARS-CoV-2 - 2023-24

Positivity Rate of **hMPV, Parainfluenza, Rhino/Enterovirus and RSV** by PCR at Wisconsin Laboratories



% Positive for hMPV      % Positive Parainfluenza  
% Positive for Rhino/Enterovirus      % Positive for RSV

# Laboratory Surveillance Report

## Enteric Pathogens

Week Ending 6/15/24

	# Tested	% Positive
Norovirus***	504	9.1%
<i>Campylobacter</i>	588	2.7%
Rotavirus	490	2.2%
Adenovirus 40/41	444	1.6%
STEC	588	1.4%
Sapovirus	444	1.1%
<i>Giardia</i>	529	1.1%
<i>Yersinia enterocolitica</i>	533	0.9%
<i>Salmonella</i>	588	0.7%
Astrovirus	444	0.7%
<i>Cyclospora</i>	458	0.7%
<i>Shigella/EIEC</i>	549	0.5%
<i>Plesiomonas shigelloides</i>	477	0.4%
Aeromonas	39	0.0%
<i>E. coli</i> 0157	172	0.0%
<i>Vibrio</i>	519	0.0%
<i>Cryptosporidium</i>	529	0.0%
<i>Entamoeba histolytica</i>	515	0.0%

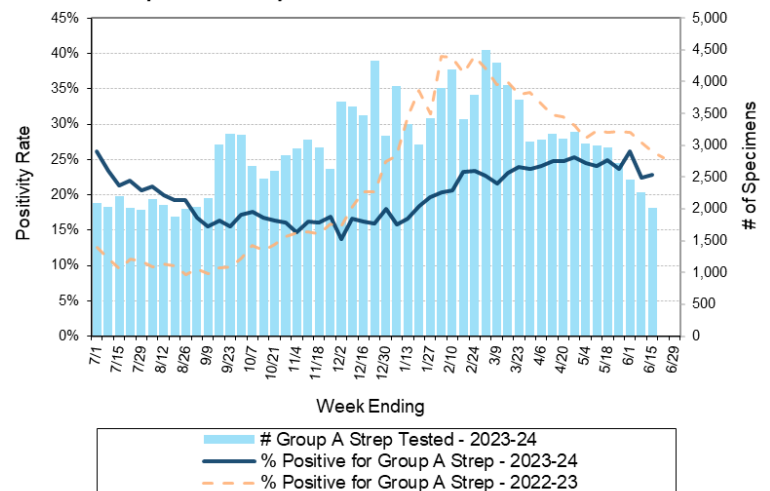
\*\*\*BioMerieux has announced an increased risk of false positive norovirus results with the BioFire FilmArray GI panel, which may increase the statewide norovirus percent positivity \*\*\*

## Respiratory Pathogens

Week Ending 6/15/24

	# Tested	% Positive
Rhinovirus/Enterovirus	1264	17.2%
Parainfluenza	1055	10.1%
SARS-CoV-2	5482	5.1%
Human metapneumovirus	1087	4.8%
<i>Bordetella pertussis</i>	786	2.2%
Adenovirus	1075	1.8%
Influenza	4696	1.2%
Seasonal coronaviruses	979	1.0%
RSV	4221	0.5%

Number Tested and Positivity Rate for Group A *Streptococcus* by PCR at Wisconsin Laboratories



## Additional Information

- Additional information on respiratory pathogens can be found on the DHS website: <https://www.dhs.wisconsin.gov/disease/respiratory.htm>
- The WSLH SARS-CoV-2 genomic dashboard is available here: <https://dataportal.slh.wisc.edu/sc2dashboard>
- The influenza, RSV and respiratory virus activity graphs can be viewed here: <http://www.slh.wisc.edu/wcln-surveillance/surveillance/virology-surveillance/>
- The bacterial, viral and parasitic activity graphs can be viewed here: <http://www.slh.wisc.edu/wcln-surveillance/surveillance/gastropathogen-surveillance/>

To subscribe to this report, email [WCLN@slh.wisc.edu](mailto:WCLN@slh.wisc.edu)