

# Laboratory Surveillance Report

\*\* For a selection of pathogens, participating Wisconsin clinical laboratories voluntarily report to WSLH on a weekly basis the total number of tests performed, and the number of those tests with positive results.

## To enhance surveillance activities, and monitor for avian influenza, each week please send:

- **PCR/Molecular Testing sites:**
  - ◇ **All influenza positive specimens**
  - ◇ Especially, Influenza A specimens:
    - That fail to subtype (Ct <35)
    - **With swine, bovine or avian exposure**
    - With international travel history
- **All Testing Sites:**
  - ◇ **Up to 5** SARS-CoV-2 positive specimens

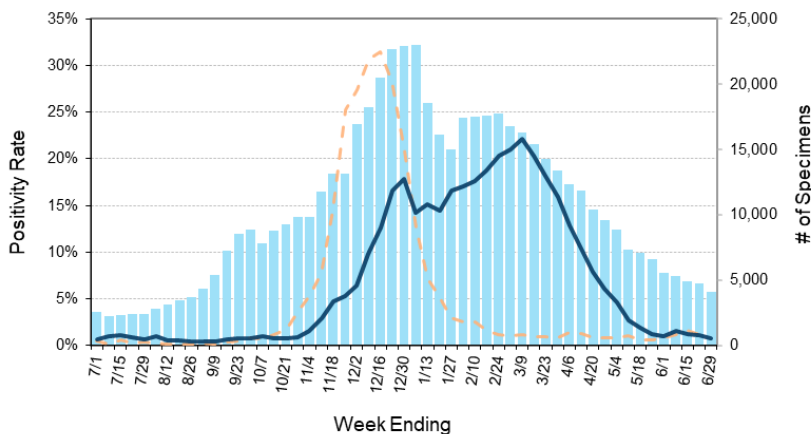
## Respiratory Snapshot:

- Influenza activity is **low** in Wisconsin (0.8%) and nationally (1.0%).
  - **Influenza A** is the dominant strain circulating (85.5%)
- Rhino/Enterovirus (14.9%) and parainfluenza virus (7.8%) activities are **high** in Wisconsin.
- SARS-CoV-2 is **increasing** (8.9%)

## Enteric Snapshot:

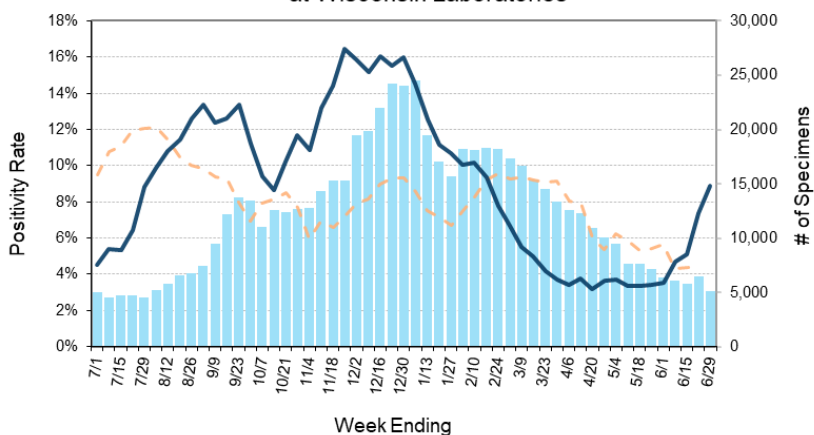
- Campylobacter (7.3%) and Salmonella (3.0%) infections are **increasing**
- **Other:**
  - Group A Streptococcus activity in Wisconsin is **decreasing** (18.5%).

Number Tested and Positivity Rate for **Influenza** by PCR at Wisconsin Laboratories



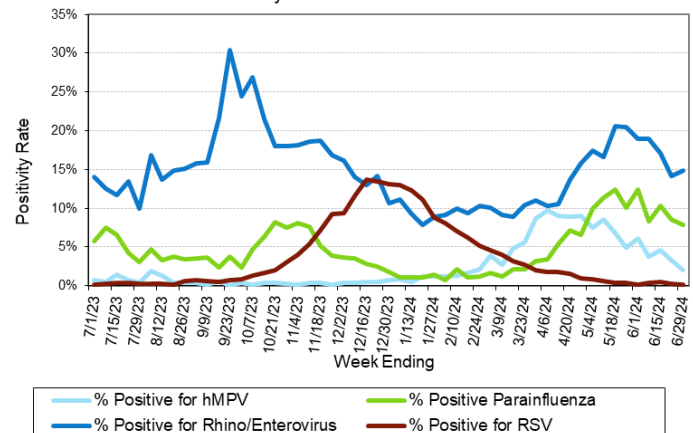
# Influenza Tested - 2023-24      % Positive for Influenza - 2022-23  
% Positive for influenza - 2023-24

Number Tested and Positivity Rate for **SARS-CoV-2** by PCR at Wisconsin Laboratories



# SARS-CoV-2 Tested - 2023-24      % Positive for SARS-CoV-2 - 2022-23  
% Positive for SARS-CoV-2 - 2023-24

Positivity Rate of **hMPV, Parainfluenza, Rhino/Enterovirus and RSV** by PCR at Wisconsin Laboratories



% Positive for hMPV      % Positive Parainfluenza  
% Positive for Rhino/Enterovirus      % Positive for RSV

# Laboratory Surveillance Report

## Enteric Pathogens

Week Ending 6/29/24

	# Tested	% Positive
Norovirus***	494	11.3%
<i>Campylobacter</i>	590	7.3%
<i>Salmonella</i>	590	3.0%
STEC	590	2.5%
Sapovirus	426	1.9%
Rotavirus	493	1.6%
<i>Cyclospora</i>	445	1.1%
Adenovirus 40/41	426	0.9%
Astrovirus	426	0.9%
<i>E. coli</i> 0157	243	0.8%
<i>Yersinia enterocolitica</i>	530	0.6%
<i>Cryptosporidium</i>	526	0.6%
<i>Plesiomonas shigelloides</i>	463	0.4%
<i>Giardia</i>	526	0.4%
<i>Vibrio</i>	511	0.2%
<i>Aeromonas</i>	60	0.0%
<i>Shigella/EIEC</i>	579	0.0%
<i>Entamoeba histolytica</i>	507	0.0%

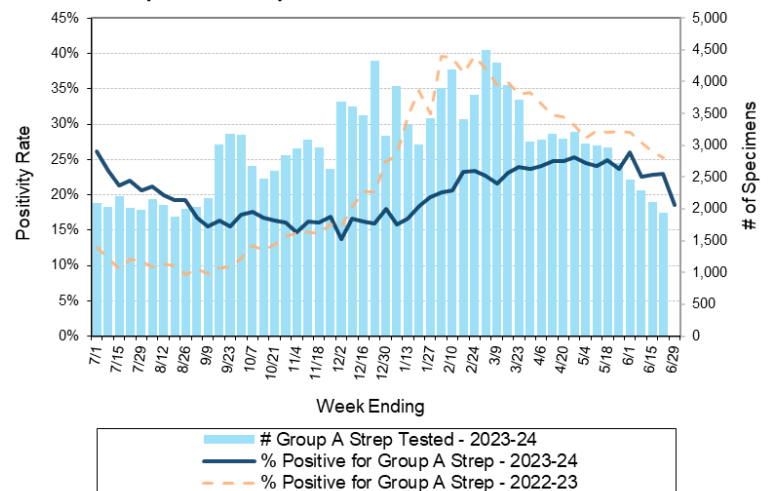
\*\*\*BioMerieux has announced an increased risk of false positive norovirus results with the BioFire FilmArray GI panel, which may increase the statewide norovirus percent positivity \*\*\*

## Respiratory Pathogens

Week Ending 6/29/24

	# Tested	% Positive
Rhinovirus/Enterovirus	1096	14.9%
SARS-CoV-2	5104	8.9%
Parainfluenza	879	7.8%
Human metapneumovirus	850	2.0%
<i>Bordetella pertussis</i>	597	2.0%
Adenovirus	884	1.5%
Influenza	4117	0.8%
Seasonal coronaviruses	792	0.5%
RSV	3706	0.2%

Number Tested and Positivity Rate for Group A *Streptococcus* by PCR at Wisconsin Laboratories



## Additional Information

- Additional information on respiratory pathogens can be found on the DHS website: <https://www.dhs.wisconsin.gov/disease/respiratory.htm>
- The WSLH SARS-CoV-2 genomic dashboard is available here: <https://dataportal.slh.wisc.edu/sc2dashboard>
- The influenza, RSV and respiratory virus activity graphs can be viewed here: <http://www.slh.wisc.edu/wcln-surveillance/surveillance/virology-surveillance/>
- The bacterial, viral and parasitic activity graphs can be viewed here: <http://www.slh.wisc.edu/wcln-surveillance/surveillance/gastropathogen-surveillance/>

To subscribe to this report, email [WCLN@slh.wisc.edu](mailto:WCLN@slh.wisc.edu)