

Laboratory Surveillance Report

**** For a selection of pathogens, participating Wisconsin clinical laboratories voluntarily report to WSLH on a weekly basis the total number of tests performed, and the number of those tests with positive results.**

To enhance surveillance activities, and monitor for avian influenza, each week please send:

- **PCR/Molecular Testing sites:**
 - ◊ **All influenza positive specimens**
 - ◊ Especially, Influenza A specimens:
 - That fail to subtype (Ct <35)
 - **With swine, bovine or avian exposure**
 - With international travel history
- **All Testing Sites:**
 - ◊ **Up to 5** SARS-CoV-2 positive specimens

Respiratory Snapshot:

- Influenza activity is **low** in Wisconsin (0.9%) and nationally (0.8%).
 - **Influenza A** is the dominant strain circulating (87.3%)
- Rhino/Enterovirus (12.5%) and parainfluenza virus (6.2%) activities are **high** in Wisconsin.
- SARS-CoV-2 activity is **high & increasing** (13.7%)

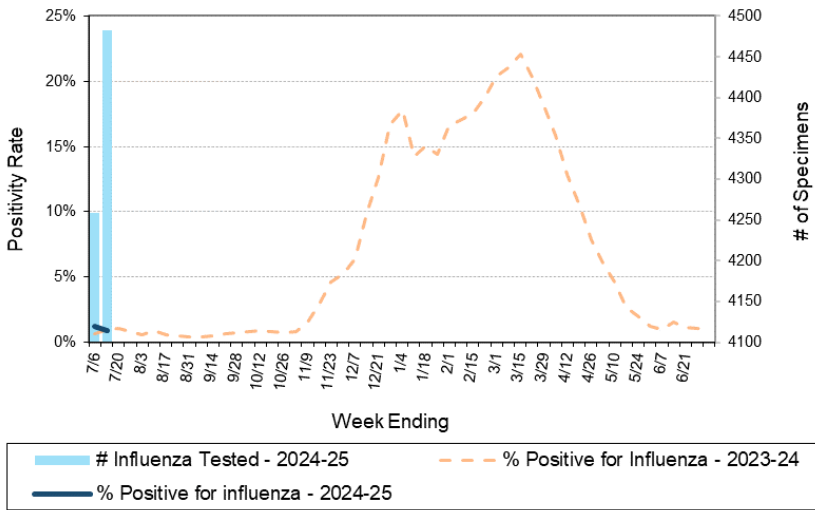
Enteric Snapshot:

- Norovirus activity is **decreasing**(9.1%)

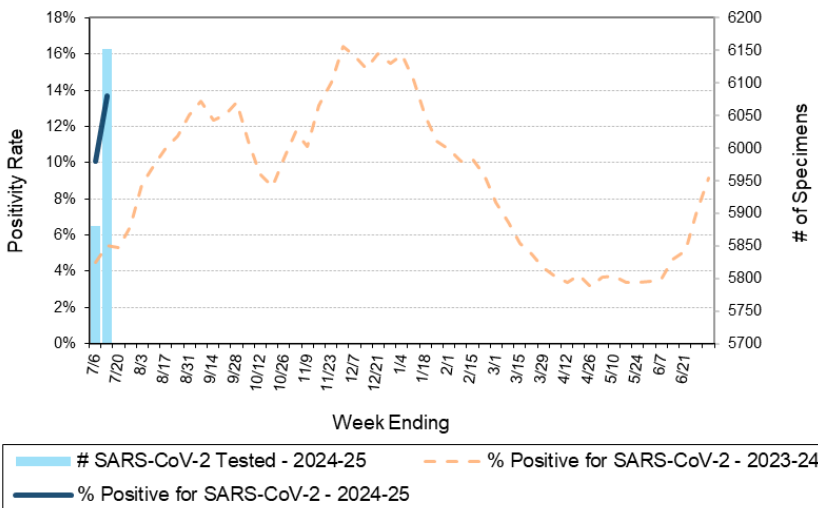
Other:

- Group A Streptococcus activity in Wisconsin is **decreasing** (16.8%).

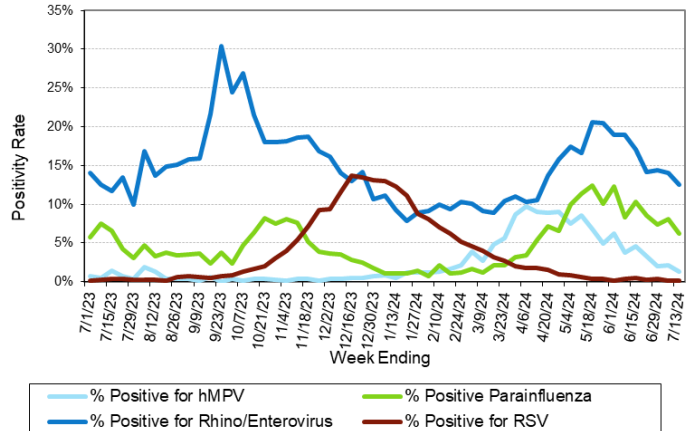
Number Tested and Positivity Rate for **Influenza** by PCR at Wisconsin Laboratories



Number Tested and Positivity Rate for **SARS-CoV-2** by PCR at Wisconsin Laboratories



Positivity Rate of **hMPV, Parainfluenza, Rhino/Enterovirus and RSV** by PCR at Wisconsin Laboratories



Laboratory Surveillance Report

Enteric Pathogens

Week Ending 7/13/24

	# Tested	% Positive
Norovirus***	572	9.1%
<i>Campylobacter</i>	718	5.8%
<i>Salmonella</i>	711	2.4%
STEC	711	2.1%
<i>Cryptosporidium</i>	592	2.0%
<i>Cyclospora</i>	513	1.2%
<i>Giardia</i>	592	1.0%
<i>Plesiomonas shigelloides</i>	532	0.8%
<i>E. coli</i> 0157	240	0.4%
<i>Shigella/EIEC</i>	678	0.4%
Adenovirus 40/41	506	0.4%
Astrovirus	506	0.4%
Sapovirus	506	0.4%
Rotavirus	572	0.3%
<i>Vibrio</i>	591	0.2%
<i>Yersinia enterocolitica</i>	591	0.2%
<i>Aeromonas</i>	53	0.0%
<i>Entamoeba histolytica</i>	585	0.0%

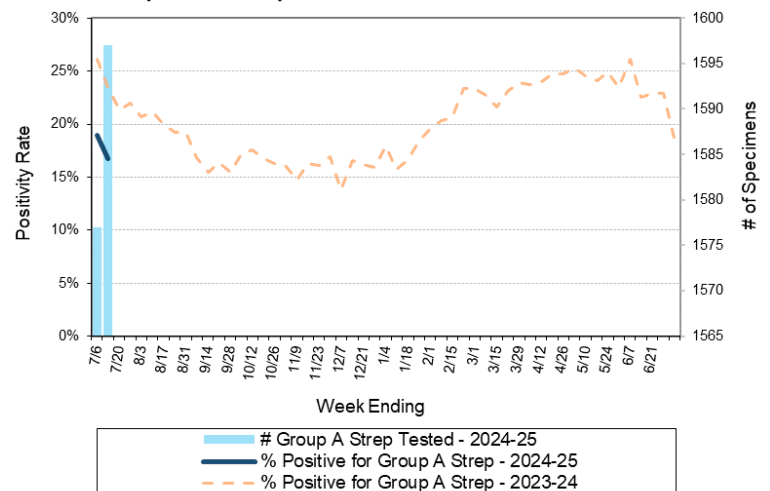
***BioMerieux has announced an increased risk of false positive norovirus results with the BioFire FilmArray GI panel, which may increase the statewide norovirus percent positivity ***

Respiratory Pathogens

Week Ending 7/13/24

	# Tested	% Positive
SARS-CoV-2	6152	13.7% ↑
Rhinovirus/Enterovirus	1173	12.5%
Parainfluenza	952	6.2%
<i>Bordetella pertussis</i>	651	1.5%
Human metapneumovirus	952	1.3%
Adenovirus	938	1.1%
Influenza	4483	0.9%
Seasonal coronaviruses	823	0.5%
RSV	4003	0.1%

Number Tested and Positivity Rate for Group A *Streptococcus* by PCR at Wisconsin Laboratories



Additional Information

- Additional information on respiratory pathogens can be found on the DHS website: <https://www.dhs.wisconsin.gov/disease/respiratory.htm>
- The WSLH SARS-CoV-2 genomic dashboard is available here: <https://dataportal.slh.wisc.edu/sc2dashboard>
- The influenza, RSV and respiratory virus activity graphs can be viewed here: <http://www.slh.wisc.edu/wcln-surveillance/surveillance/virology-surveillance/>
- The bacterial, viral and parasitic activity graphs can be viewed here: <http://www.slh.wisc.edu/wcln-surveillance/surveillance/gastropathogen-surveillance/>

To subscribe to this report, email WCLN@slh.wisc.edu