

Laboratory Surveillance Report

**** For a selection of pathogens, participating Wisconsin clinical laboratories voluntarily report to WSLH on a weekly basis the total number of tests performed, and the number of those tests with positive results.**

To enhance surveillance activities, and monitor for avian influenza, each week please send:

- **PCR/Molecular Testing sites:**
 - ◊ **All influenza positive specimens**
 - ◊ Especially, Influenza A specimens:
 - That fail to subtype (Ct <35)
 - **With swine, bovine or avian exposure**
 - With international travel history
- **All Testing Sites:**
 - ◊ **Up to 5** SARS-CoV-2 positive specimens

Respiratory Snapshot:

- Influenza activity is **low** in Wisconsin (0.3%) and nationally (0.7%).
 - **Influenza A** is the dominant strain circulating (89.1%)
- Rhinovirus/Enterovirus activity is **high** (10.5%) in Wisconsin.
- SARS-CoV-2 activity is **high & increasing** (16.7%)

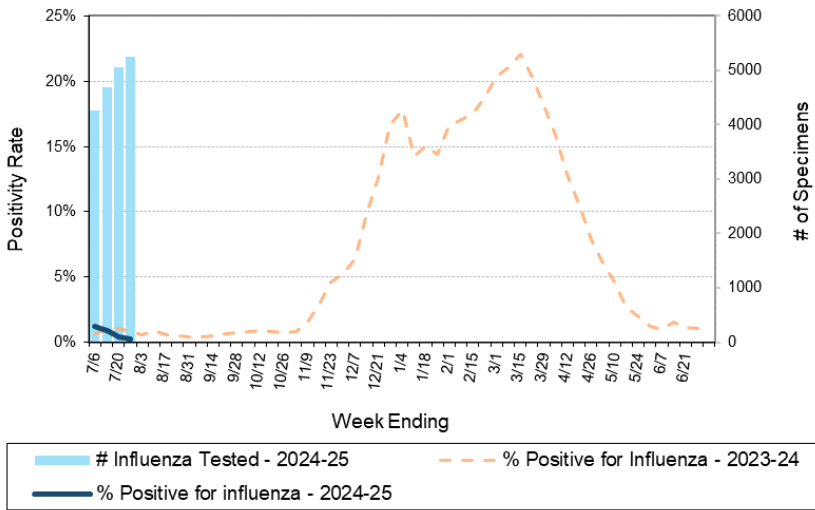
Enteric Snapshot:

- Norovirus activity is **decreasing** (5.6%)

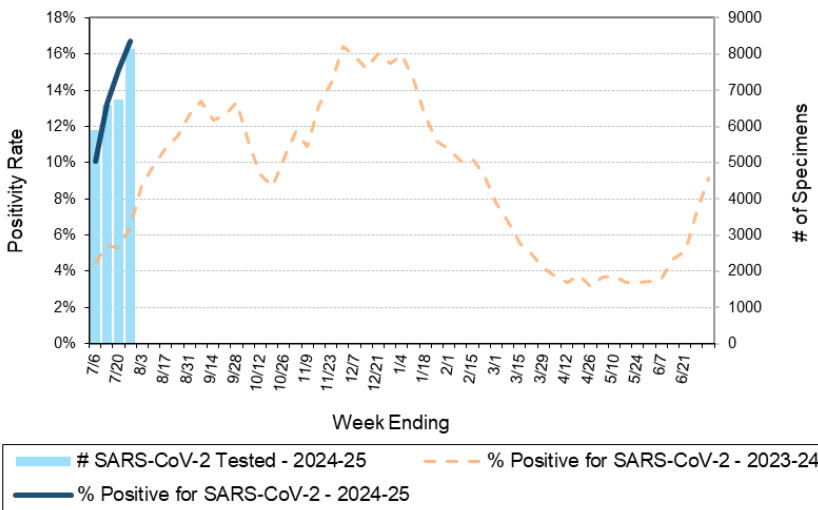
Other:

- Group A Streptococcus activity in Wisconsin is **decreasing** (14.7%).

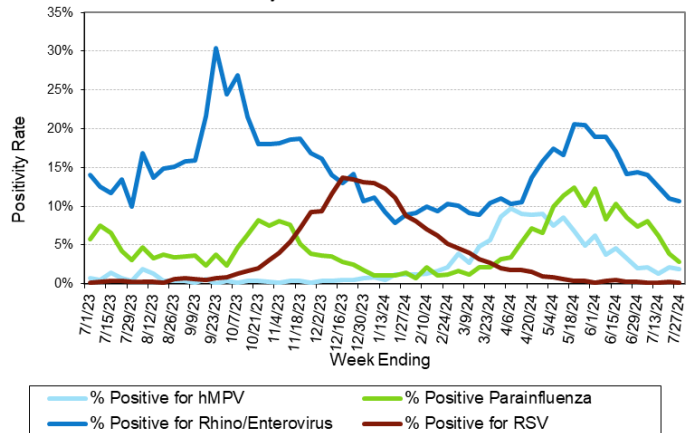
Number Tested and Positivity Rate for **Influenza** by PCR at Wisconsin Laboratories



Number Tested and Positivity Rate for **SARS-CoV-2** by PCR at Wisconsin Laboratories



Positivity Rate of **hMPV, Parainfluenza, Rhino/Enterovirus and RSV** by PCR at Wisconsin Laboratories



Laboratory Surveillance Report

Enteric Pathogens

Week Ending 7/27/24

	# Tested	% Positive
Norovirus***	628	5.6% ↓
<i>Cryptosporidium</i>	608	4.6%
<i>Campylobacter</i>	750	4.1%
<i>Giardia</i>	608	3.3%
<i>Salmonella</i>	750	2.5%
STEC	750	1.9%
<i>Plesiomonas shigelloides</i>	560	0.9%
<i>Yersinia enterocolitica</i>	662	0.9%
<i>Cyclospora</i>	538	0.9%
Astrovirus	522	0.6%
Adenovirus 40/41	522	0.4%
<i>Shigella/EIEC</i>	729	0.3%
<i>Vibrio</i>	647	0.2%
Rotavirus	625	0.2%
<i>Entamoeba histolytica</i>	592	0.2%
<i>Aeromonas</i>	54	0.0%
<i>E. coli</i> 0157	213	0.0%
Sapovirus	522	0.0%

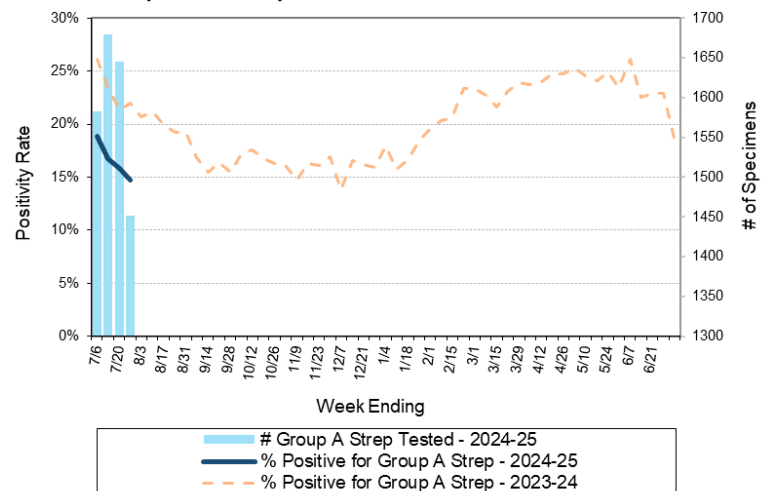
***BioMerieux has announced an increased risk of false positive norovirus results with the BioFire FilmArray GI panel, which may increase the statewide norovirus percent positivity ***

Respiratory Pathogens

Week Ending 7/27/24

	# Tested	% Positive
SARS-CoV-2	8136	16.7% ↑
Rhinovirus/Enterovirus	1312	10.7%
Parainfluenza	728	2.9%
<i>Bordetella pertussis</i>	504	2.0%
Human metapneumovirus	730	1.9%
Seasonal coronaviruses	627	1.1%
Adenovirus	722	0.8%
Influenza	5243	0.3%
RSV	4622	0.1%

Number Tested and Positivity Rate for Group A *Streptococcus* by PCR at Wisconsin Laboratories



Additional Information

- Additional information on respiratory pathogens can be found on the DHS website: <https://www.dhs.wisconsin.gov/disease/respiratory.htm>
- The WSLH SARS-CoV-2 genomic dashboard is available here: <https://dataportal.slh.wisc.edu/sc2dashboard>
- The influenza, RSV and respiratory virus activity graphs can be viewed here: <http://www.slh.wisc.edu/wcln-surveillance/surveillance/virology-surveillance/>
- The bacterial, viral and parasitic activity graphs can be viewed here: <http://www.slh.wisc.edu/wcln-surveillance/surveillance/gastropathogen-surveillance/>

To subscribe to this report, email WCLN@slh.wisc.edu