

Laboratory Surveillance Report

**** For a selection of pathogens, participating Wisconsin clinical laboratories voluntarily report to WSLH on a weekly basis the total number of tests performed, and the number of those tests with positive results.**

To enhance surveillance activities, and monitor for avian influenza, each week please send:

- **PCR/Molecular Testing sites:**
 - ◊ **All influenza positive specimens**
 - ◊ Especially, Influenza A specimens:
 - That fail to subtype (Ct <35)
 - **With swine, bovine or avian exposure**
 - With international travel history
- **All Testing Sites:**
 - ◊ **Up to 5** SARS-CoV-2 positive specimens

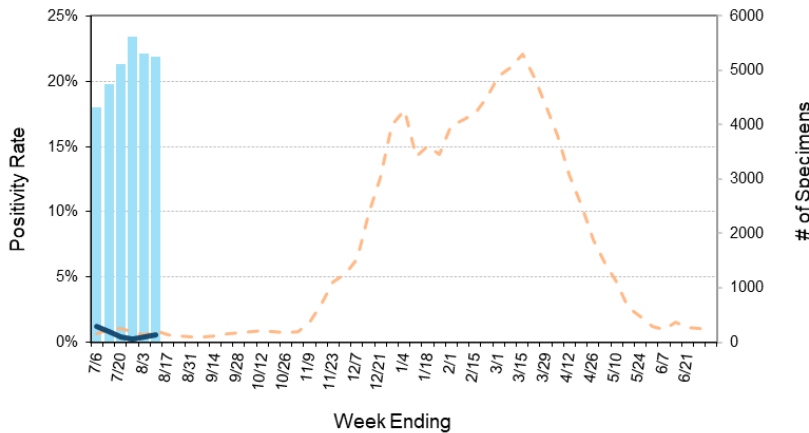
Respiratory Snapshot:

- Influenza activity is **low** in Wisconsin (0.5%) and nationally (0.4%)
 - **Influenza A** is the dominant strain circulating (87.1%)
- Rhinovirus/Enterovirus activity is **high** (11.1%) in Wisconsin.
- SARS-CoV-2 activity is **high** (18.8%)
- hMPV(0.6%), seasonal coronavirus(0.4%) and RSV(0.1%) activities are **low** in Wisconsin

Enteric Snapshot:

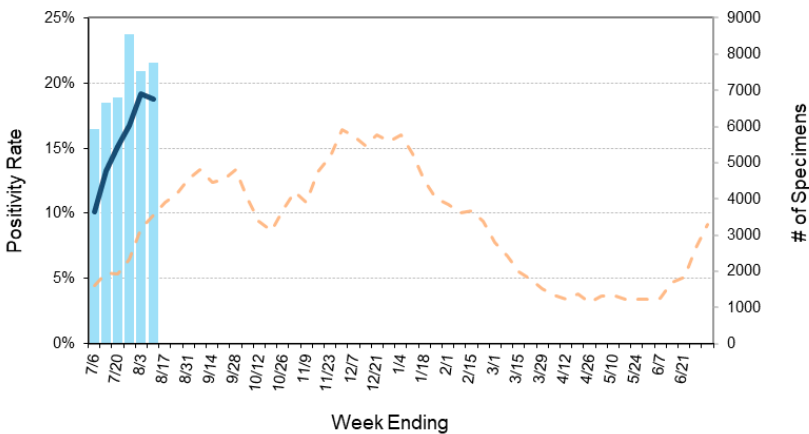
- Norovirus activity is **decreasing** (5.1%)
- Cryptosporidium activity is **decreasing** (2.8%)

Number Tested and Positivity Rate for **Influenza** by PCR at Wisconsin Laboratories



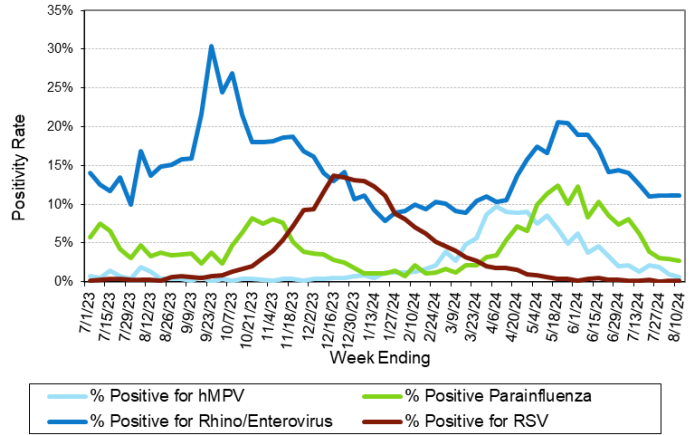
■ # Influenza Tested - 2024-25 - - - % Positive for Influenza - 2023-24
— % Positive for influenza - 2024-25

Number Tested and Positivity Rate for **SARS-CoV-2** by PCR at Wisconsin Laboratories



■ # SARS-CoV-2 Tested - 2024-25 - - - % Positive for SARS-CoV-2 - 2023-24
— % Positive for SARS-CoV-2 - 2024-25

Positivity Rate of **hMPV, Parainfluenza, Rhino/Enterovirus and RSV** by PCR at Wisconsin Laboratories



Laboratory Surveillance Report

Enteric Pathogens

Week Ending 8/10/24

	# Tested	% Positive
Norovirus***	628	5.1%
<i>Campylobacter</i>	776	3.4%
<i>Salmonella</i>	776	2.8%
<i>Cryptosporidium</i>	670	2.8%↓
<i>Giardia</i>	670	2.7%
STEC	685	1.5%
Sapovirus	539	1.3%
<i>E. coli</i> 0157	331	1.2%
Adenovirus 40/41	539	1.1%
<i>Cyclospora</i>	564	1.1%
<i>Shigella/EIEC</i>	766	0.7%
<i>Plesiomonas shigelloides</i>	578	0.5%
Rotavirus	624	0.5%
<i>Yersinia enterocolitica</i>	663	0.2%
Astrovirus	539	0.2%
<i>Aeromonas</i>	56	0.0%
<i>Vibrio</i>	638	0.0%
<i>Entamoeba histolytica</i>	645	0.0%

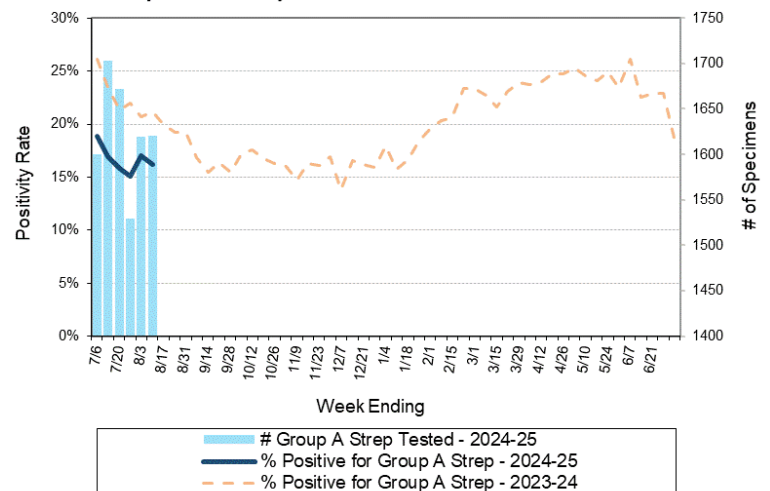
***BioMerieux has announced an increased risk of false positive norovirus results with the BioFire FilmArray GI panel, which may increase the statewide norovirus percent positivity ***

Respiratory Pathogens

Week Ending 8/10/24

	# Tested	% Positive
SARS-CoV-2	7771	18.8%
Rhinovirus/Enterovirus	1015	11.1%
Parainfluenza	614	2.8%
<i>Bordetella pertussis</i>	488	1.8%
Adenovirus	641	1.7%
Human metapneumovirus	650	0.6%
Influenza	5258	0.5%
Seasonal coronaviruses	521	0.4%
RSV	4670	0.1%

Number Tested and Positivity Rate for Group A *Streptococcus* by PCR at Wisconsin Laboratories



Additional Information

- Additional information on respiratory pathogens can be found on the DHS website: <https://www.dhs.wisconsin.gov/disease/respiratory.htm>
- The WSLH SARS-CoV-2 genomic dashboard is available here: <https://dataportal.slh.wisc.edu/sc2dashboard>
- The influenza, RSV and respiratory virus activity graphs can be viewed here: <http://www.slh.wisc.edu/wcln-surveillance/surveillance/virology-surveillance/>
- The bacterial, viral and parasitic activity graphs can be viewed here: <http://www.slh.wisc.edu/wcln-surveillance/surveillance/gastropathogen-surveillance/>

To subscribe to this report, email WCLN@slh.wisc.edu