

Laboratory Surveillance Report

**** For a selection of pathogens, participating Wisconsin clinical laboratories voluntarily report to WSLH on a weekly basis the total number of tests performed, and the number of those tests with positive results.**

To enhance surveillance activities, and monitor for avian influenza, each week please send:

- **PCR/Molecular Testing sites:**
 - ◊ **All influenza positive specimens**
 - ◊ Especially, Influenza A specimens:
 - That fail to subtype (Ct <35)
 - **With swine, bovine or avian exposure**
 - With international travel history
- **All Testing Sites:**
 - ◊ **Up to 5** SARS-CoV-2 positive specimens

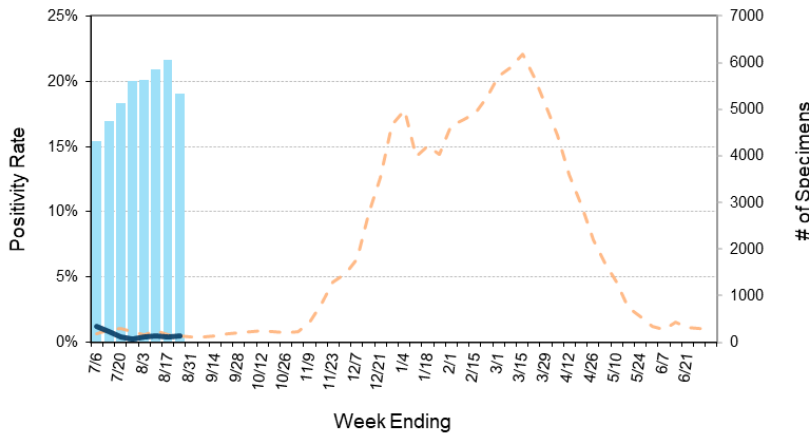
Respiratory Snapshot:

- Influenza activity is **low** in Wisconsin (0.5%) and nationally (0.4%)
 - **Influenza A** is the dominant strain circulating (85.7%)
- Rhinovirus/Enterovirus activity is **high** (12.3%) in Wisconsin.
- SARS-CoV-2 activity is **high** (18.6%)
- hMPV(0.5%), seasonal coronavirus(0.7%) and RSV(0.1%) activities are **low** in Wisconsin

Enteric Snapshot:

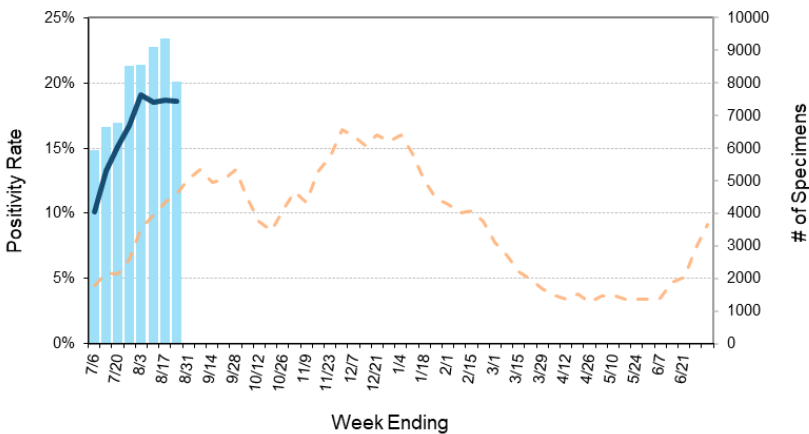
- Norovirus activity is **decreasing** (3.7%)
- Giardia activity is **decreasing** (1.5%)

Number Tested and Positivity Rate for **Influenza** by PCR at Wisconsin Laboratories



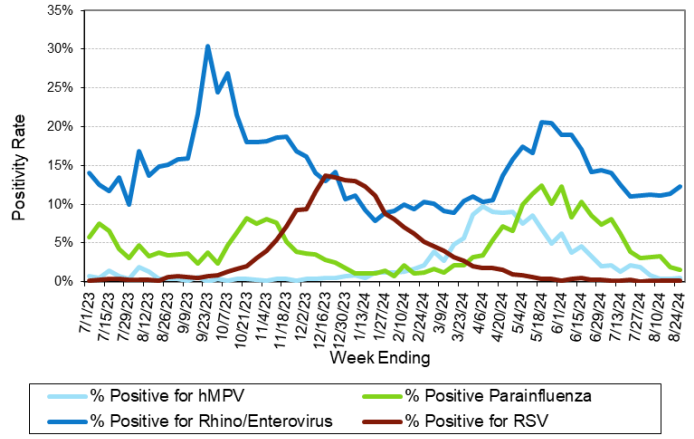
■ # Influenza Tested - 2024-25 - - - % Positive for Influenza - 2023-24
— % Positive for influenza - 2024-25

Number Tested and Positivity Rate for **SARS-CoV-2** by PCR at Wisconsin Laboratories



■ # SARS-CoV-2 Tested - 2024-25 - - - % Positive for SARS-CoV-2 - 2023-24
— % Positive for SARS-CoV-2 - 2024-25

Positivity Rate of **hMPV, Parainfluenza, Rhino/Enterovirus and RSV** by PCR at Wisconsin Laboratories



— % Positive for hMPV — % Positive Parainfluenza
— % Positive for Rhino/Enterovirus — % Positive for RSV

Laboratory Surveillance Report

Enteric Pathogens

Week Ending 8/24/24

	# Tested	% Positive
Norovirus***	535	3.7%
<i>Salmonella</i>	675	3.1%
<i>Campylobacter</i>	675	2.7%
<i>Cryptosporidium</i>	534	2.4%
<i>Giardia</i>	534	1.5%
STEC	675	1.3%
<i>Yersinia enterocolitica</i>	564	0.9%
<i>Cyclospora</i>	459	0.9%
<i>Plesiomonas shigelloides</i>	491	0.8%
<i>Shigella/EIEC</i>	631	0.8%
Adenovirus 40/41	459	0.7%
<i>E. coli</i> 0157	232	0.4%
Rotavirus	532	0.4%
<i>Aeromonas</i>	47	0.0%
<i>Vibrio</i>	564	0.0%
Astrovirus	459	0.0%
Sapovirus	459	0.0%
<i>Entamoeba histolytica</i>	534	0.0%

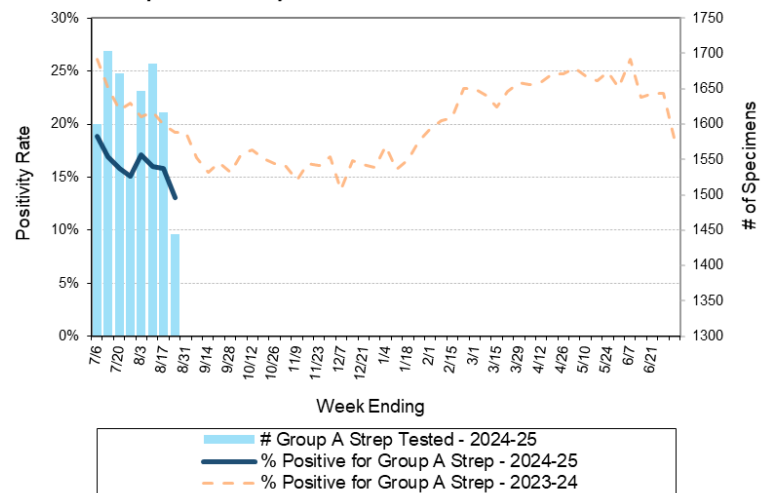
***BioMerieux has announced an increased risk of false positive norovirus results with the BioFire FilmArray GI panel, which may increase the statewide norovirus percent positivity ***

Respiratory Pathogens

Week Ending 8/24/24

	# Tested	% Positive
SARS-CoV-2	8027	18.6%
Rhinovirus/Enterovirus	999	12.3%
<i>Bordetella pertussis</i>	626	2.7%
Parainfluenza	784	1.5%
Adenovirus	768	0.8%
Seasonal coronaviruses	692	0.7%
Human metapneumovirus	785	0.5%
Influenza	5328	0.5%
RSV	4626	0.1%

Number Tested and Positivity Rate for Group A *Streptococcus* by PCR at Wisconsin Laboratories



Week Ending 2/24/24

- Additional information on respiratory pathogens can be found on the DHS website: <https://www.dhs.wisconsin.gov/disease/respiratory.htm>
- The WSLH SARS-CoV-2 genomic dashboard is available here: <https://dataportal.slh.wisc.edu/sc2dashboard>
- The influenza, RSV and respiratory virus activity graphs can be viewed here: <http://www.slh.wisc.edu/wcln-surveillance/surveillance/virology-surveillance/>
- The bacterial, viral and parasitic activity graphs can be viewed here: <http://www.slh.wisc.edu/wcln-surveillance/surveillance/gastropathogen-surveillance/>

To subscribe to this report, email WCLN@slh.wisc.edu