


# Laboratory Surveillance Report

**\*\* For a selection of pathogens, participating Wisconsin clinical laboratories voluntarily report to WSLH on a weekly basis the total number of tests performed, and the number of those tests with positive results.**

**To enhance surveillance activities, and monitor for avian influenza, each week please send:**

- **PCR/Molecular Testing sites:**
  - ◊ **All influenza positive specimens**
  - ◊ Especially, Influenza A specimens:
    - That fail to subtype (Ct <35)
    - **With swine, bovine or avian exposure**
    - With international travel history
- **All Testing Sites:**
  - ◊ **Up to 5** SARS-CoV-2 positive specimens
- **All Enterovirus positive CSF Specimens**



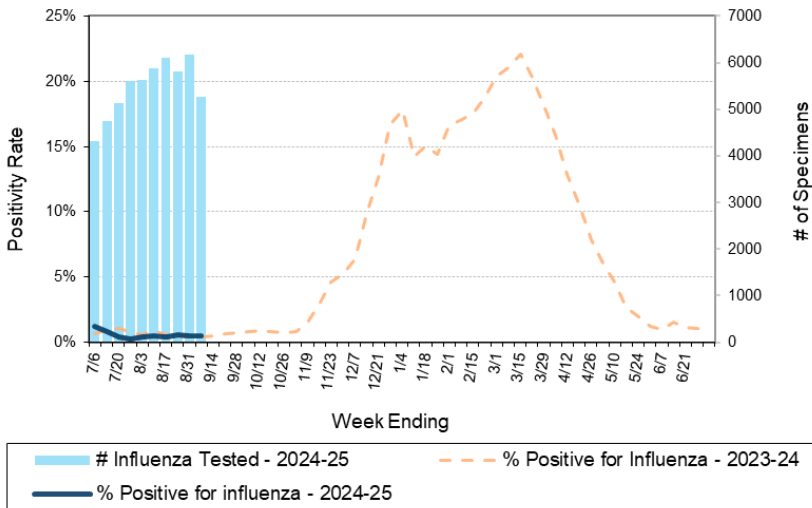
**Respiratory Snapshot:**

- Influenza activity is **low** in Wisconsin (0.5%) and nationally (0.4%)
  - **Influenza A** is the dominant strain circulating (86%)
- Rhinovirus/Enterovirus activity is **high** (12.3%) in Wisconsin.
- SARS-CoV-2 activity is **high** (16.2%)
- hMPV(0.6%), seasonal coronavirus(0.5%) and RSV(0.1%) activities are **low** in Wisconsin

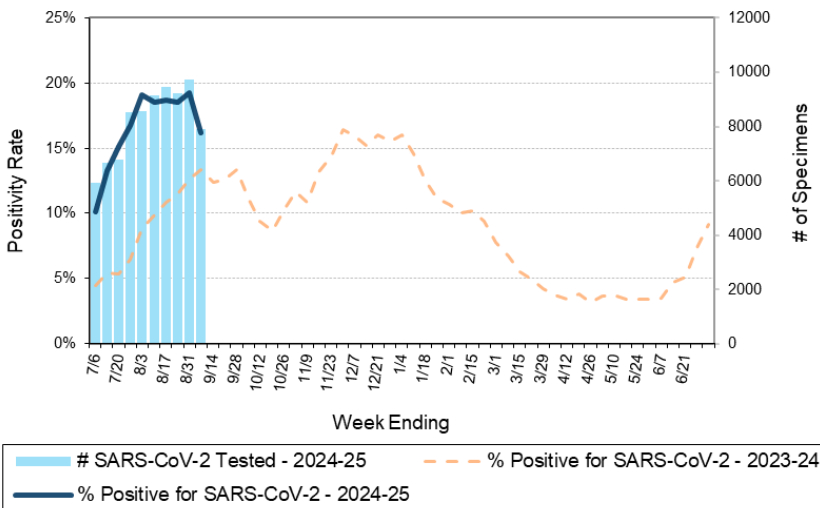
**Enteric Snapshot:**

- Norovirus activity is **moderate** (4.7%)
- **Salmonella** activity is **increasing** (3.8%)

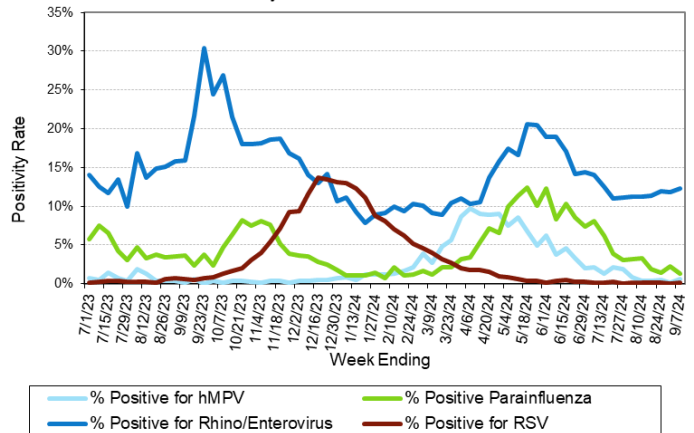
Number Tested and Positivity Rate for **Influenza** by PCR at Wisconsin Laboratories



Number Tested and Positivity Rate for **SARS-CoV-2** by PCR at Wisconsin Laboratories



Positivity Rate of **hMPV, Parainfluenza, Rhino/Enterovirus and RSV** by PCR at Wisconsin Laboratories



# Laboratory Surveillance Report

## Enteric Pathogens

Week Ending 9/7/24

	# Tested	% Positive
Norovirus***	424	4.7%
<i>Salmonella</i>	505	3.8%
<i>Campylobacter</i>	505	3.0%
STEC	505	2.0%
<i>Cryptosporidium</i>	446	2.0%
<i>E. coli</i> 0157	198	1.5%
<i>Shigella</i> /EIEC	471	1.3%
Rotavirus	424	1.2%
<i>Giardia</i>	446	1.1%
<i>Yersinia enterocolitica</i>	454	0.7%
Adenovirus 40/41	361	0.6%
<i>Plesiomonas shigelloides</i>	391	0.5%
<i>Vibrio</i>	445	0.4%
Sapovirus	361	0.3%
<i>Cyclospora</i>	370	0.3%
<i>Entamoeba histolytica</i>	444	0.2%
Aeromonas	49	0.0%
Astrovirus	361	0.0%

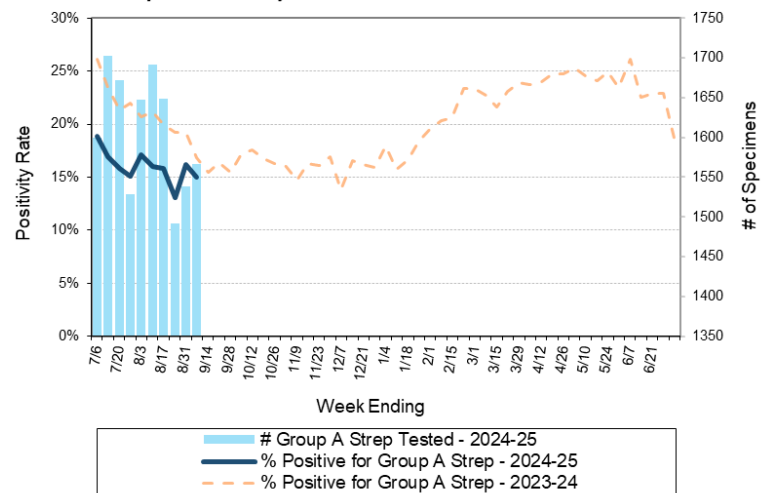
\*\*\*BioMerieux has announced an increased risk of false positive norovirus results with the BioFire FilmArray GI panel, which may increase the statewide norovirus percent positivity \*\*\*

## Respiratory Pathogens

Week Ending 9/7/24

	# Tested	% Positive
SARS-CoV-2	7888	16.2%
Rhinovirus/Enterovirus	995	12.3%
<i>Bordetella pertussis</i>	479	3.3%
Parainfluenza	678	1.3%
Human metapneumovirus	678	0.6%
Seasonal coronaviruses	568	0.5%
Influenza	5274	0.5%
Adenovirus	670	0.3%
RSV	4610	0.1%

Number Tested and Positivity Rate for Group A *Streptococcus* by PCR at Wisconsin Laboratories



Week Ending 2/24/24

- Additional information on respiratory pathogens can be found on the DHS website: <https://www.dhs.wisconsin.gov/disease/respiratory.htm>
- The WSLH SARS-CoV-2 genomic dashboard is available here: <https://dataportal.slh.wisc.edu/sc2dashboard>
- The influenza, RSV and respiratory virus activity graphs can be viewed here: <http://www.slh.wisc.edu/wcln-surveillance/surveillance/virology-surveillance/>
- The bacterial, viral and parasitic activity graphs can be viewed here: <http://www.slh.wisc.edu/wcln-surveillance/surveillance/gastropathogen-surveillance/>

To subscribe to this report, email [WCLN@slh.wisc.edu](mailto:WCLN@slh.wisc.edu)