

Laboratory Surveillance Report

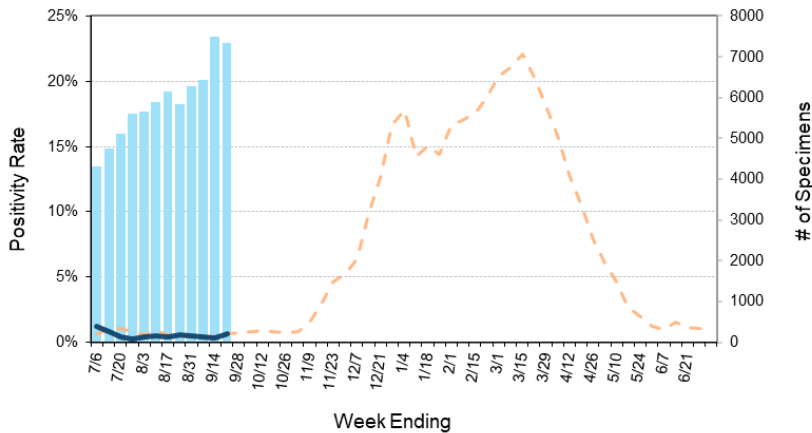
** For a selection of pathogens, participating Wisconsin clinical laboratories voluntarily report to WSLH on a weekly basis the total number of tests performed, and the number of those tests with positive results.

To enhance surveillance activities, and monitor for avian influenza, each week please send:

- **PCR/Molecular Testing sites:**
 - ◇ **All influenza positive specimens**
 - ◇ Especially, Influenza A specimens:
 - That fail to subtype (Ct <35)
 - **With swine, bovine or avian exposure**
 - With international travel history
- **All Testing Sites:**
 - ◇ **Up to 5** SARS-CoV-2 positive specimens
- **All Enterovirus positive CSF Specimens**

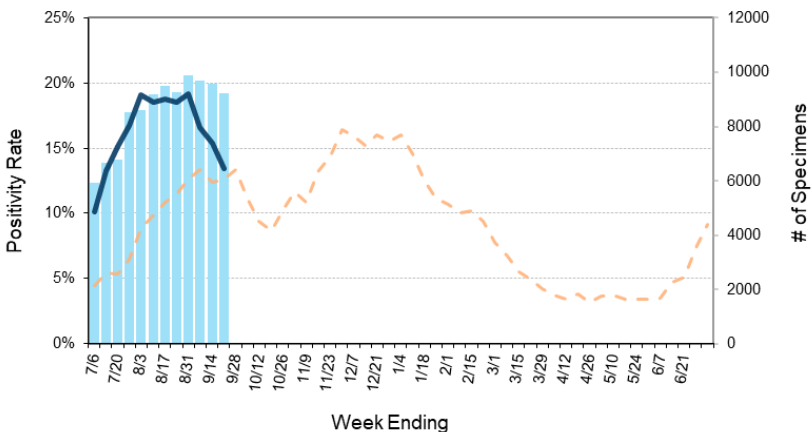


Number Tested and Positivity Rate for **Influenza** by PCR at Wisconsin Laboratories



Influenza Tested - 2024-25 % Positive for Influenza - 2023-24
% Positive for influenza - 2024-25

Number Tested and Positivity Rate for **SARS-CoV-2** by PCR at Wisconsin Laboratories



SARS-CoV-2 Tested - 2024-25 % Positive for SARS-CoV-2 - 2023-24
% Positive for SARS-CoV-2 - 2024-25

Respiratory Snapshot:

- Influenza activity is **low** in Wisconsin (0.6%) and nationally (0.6%)
 - **Influenza A** is the dominant strain circulating (87%)
- Rhinovirus/Enterovirus activity is **high** (25.0%) in Wisconsin.
- SARS-CoV-2 activity in Wisconsin is **decreasing** (13.4%)
- *Bordetella pertussis* activity in Wisconsin is **elevated** (2.2%)

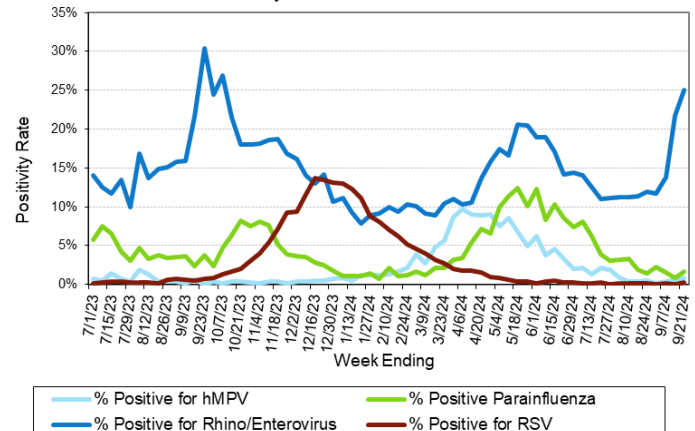
Enteric Snapshot:

- Norovirus activity is **moderate** (4.2%)

Other:

- Group A *Streptococcus* activity in Wisconsin is **moderate** (14.4%).

Positivity Rate of **hMPV, Parainfluenza, Rhino/Enterovirus and RSV** by PCR at Wisconsin Laboratories



Laboratory Surveillance Report

Enteric Pathogens

Week Ending 9/21/24

	# Tested	% Positive
Norovirus***	505	4.2%
<i>Campylobacter</i>	618	2.4%
<i>Salmonella</i>	618	1.8%
<i>Cryptosporidium</i>	535	1.5%
STEC	618	1.3%
Adenovirus 40/41	444	1.1%
<i>E. coli</i> 0157	290	1.0%
<i>Giardia</i>	535	0.9%
Sapovirus	444	0.7%
<i>Shigella/EIEC</i>	580	0.5%
<i>Plesiomonas shigelloides</i>	493	0.4%
<i>Yersinia enterocolitica</i>	553	0.4%
<i>Cyclospora</i>	458	0.4%
Astrovirus	444	0.2%
Rotavirus	504	0.2%
<i>Entamoeba histolytica</i>	521	0.2%
<i>Aeromonas</i>	47	0.0%
<i>Vibrio</i>	539	0.0%

***BioMerieux has announced an increased risk of false positive norovirus results with the BioFire FilmArray GI panel, which may increase the statewide norovirus percent positivity **

Respiratory Pathogens

Week Ending 9/21/24

	# Tested	% Positive
Rhinovirus/Enterovirus	1475	25.0% ↑
SARS-CoV-2	9235	13.4% ↓
<i>Bordetella pertussis</i>	964	2.2%
Parainfluenza	1044	1.6%
Adenovirus	1022	1.3%
Human metapneumovirus	1044	0.9%
Seasonal coronaviruses	888	0.6%
Influenza	7344	0.6%
RSV	6415	0.2%

Number Tested and Positivity Rate for Group A *Streptococcus* by PCR at Wisconsin Laboratories



Additional Information

- Additional information on respiratory pathogens can be found on the DHS website: <https://www.dhs.wisconsin.gov/disease/respiratory.htm>
- Activity graphs for a variety of respiratory pathogens can be found on the DHS Respiratory Illness Dashboard: <https://www.dhs.wisconsin.gov/disease/laboratory-based-data.htm>
- Activity graphs for a variety of gastrointestinal pathogens can be found on the WSLH website: <http://www.slh.wisc.edu/wcln-surveillance/surveillance/gastropathogen-surveillance/>
- The WSLH SARS-CoV-2 genomic dashboard is available here: <https://dataportal.slh.wisc.edu/sc2dashboard>



To subscribe to this report, email WCLN@slh.wisc.edu