

# Laboratory Surveillance Report

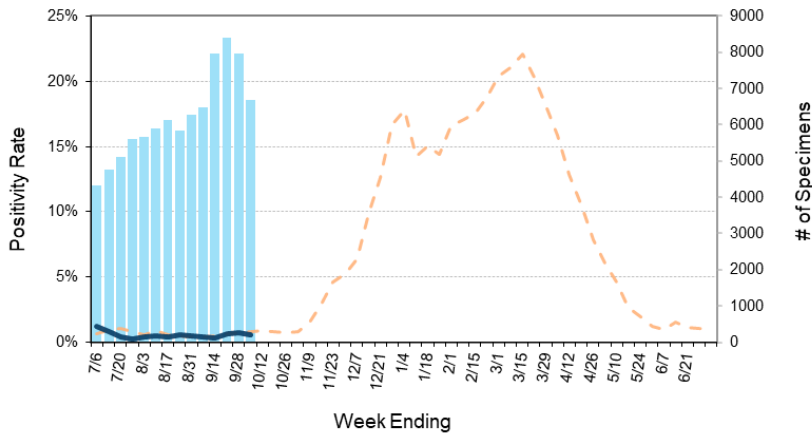
\*\* For a selection of pathogens, participating Wisconsin clinical laboratories voluntarily report to WSLH on a weekly basis the total number of tests performed, and the number of those tests with positive results.

## To enhance surveillance activities, and monitor for avian influenza, each week please send:

- PCR/Molecular Testing sites:
  - ◇ **All influenza positive specimens**
  - ◇ Especially, Influenza A specimens:
    - That fail to subtype (Ct <35)
    - **With swine, bovine or avian exposure**
    - With international travel history
- **All Testing Sites:**
  - ◇ **Up to 5** SARS-CoV-2 positive specimens
- **All Enterovirus positive CSF Specimens**

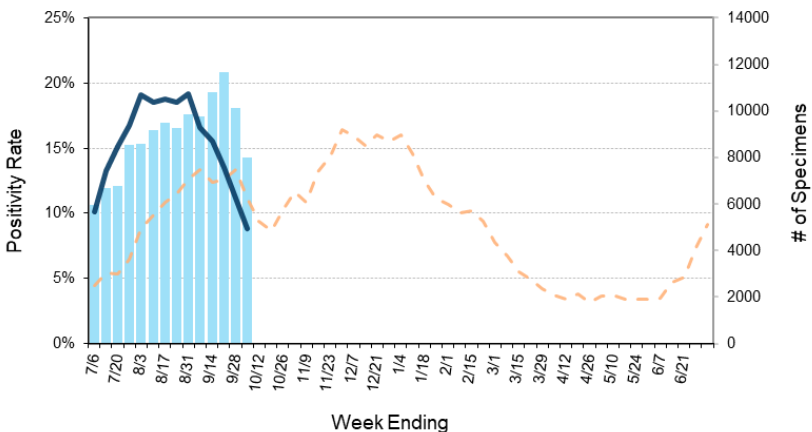


Number Tested and Positivity Rate for **Influenza** by PCR at Wisconsin Laboratories



# Influenza Tested - 2024-25      % Positive for Influenza - 2023-24  
% Positive for influenza - 2024-25

Number Tested and Positivity Rate for **SARS-CoV-2** by PCR at Wisconsin Laboratories



# SARS-CoV-2 Tested - 2024-25      % Positive for SARS-CoV-2 - 2023-24  
% Positive for SARS-CoV-2 - 2024-25

## Respiratory Snapshot:

- Influenza activity is **low** in Wisconsin (0.6%) and nationally (0.7%)
  - **Influenza A** is the dominant strain circulating (87%)
- Rhinovirus/Enterovirus activity is **high** (24.5%) in Wisconsin
- SARS-CoV-2 activity in Wisconsin is **decreasing** (8.8%)
- *Bordetella pertussis* activity in Wisconsin is elevated (3.3%)

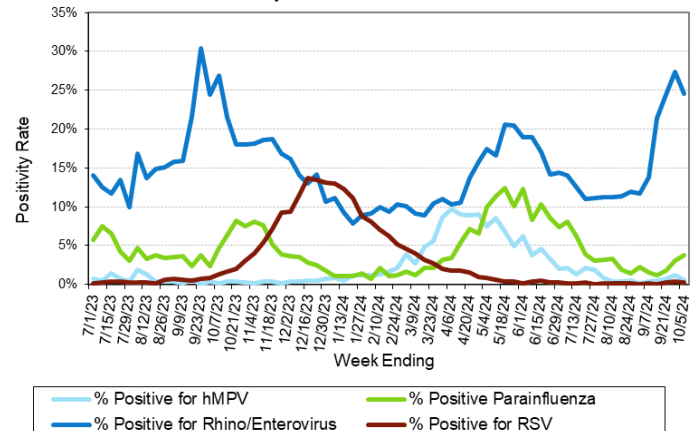
## Enteric Snapshot:

- Norovirus activity is **increasing** (7.4%)

## Other:

- Group A *Streptococcus* activity in Wisconsin is **moderate** (15.2%).

Positivity Rate of **hMPV, Parainfluenza, Rhino/Enterovirus and RSV** by PCR at Wisconsin Laboratories



% Positive for hMPV      % Positive Parainfluenza  
% Positive for Rhino/Enterovirus      % Positive for RSV

# Laboratory Surveillance Report

## Enteric Pathogens

Week Ending 10/5/24

	# Tested	% Positive
Norovirus***	432	7.4% ↑
<i>Campylobacter</i>	593	3.4%
<i>Giardia</i>	481	2.1%
<i>Salmonella</i>	593	1.7%
STEC	593	1.3%
<i>Yersinia enterocolitica</i>	480	0.6%
<i>Cryptosporidium</i>	481	0.6%
<i>E. coli</i> 0157	277	0.4%
<i>Plesiomonas shigelloides</i>	447	0.4%
Adenovirus 40/41	395	0.3%
Sapovirus	395	0.3%
<i>Shigella</i> /EIEC	592	0.2%
<i>Aeromonas</i>	30	0.0%
<i>Vibrio</i>	470	0.0%
Astrovirus	395	0.0%
Rotavirus	428	0.0%
<i>Cyclospora</i>	405	0.0%
<i>Entamoeba histolytica</i>	471	0.0%

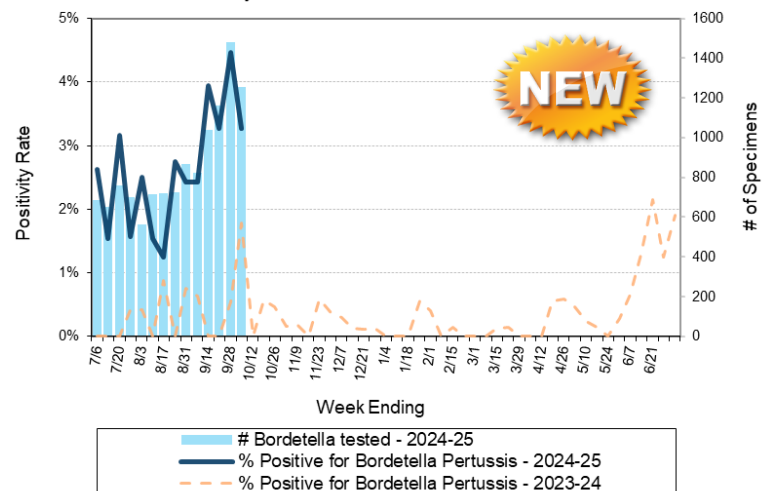
\*\*\*BioMerieux has announced an increased risk of false positive norovirus results with the BioFire FilmArray GI panel, which may increase the statewide norovirus percent positivity \*\*

## Respiratory Pathogens

Week Ending 10/5/24

	# Tested	% Positive
Rhinovirus/Enterovirus	1240	24.5%
SARS-CoV-2	8008	8.8% ↓
Parainfluenza	877	3.8%
<i>Bordetella pertussis</i>	1254	3.3%
Adenovirus	908	1.7%
Influenza	6693	0.6%
Human metapneumovirus	877	0.6%
Seasonal coronaviruses	719	0.3%
RSV	5825	0.3%

Number Tested and Positivity Rate for *Bordetella pertussis* by PCR at Wisconsin Laboratories



## Additional Information

- Additional information on respiratory pathogens can be found on the DHS website: <https://www.dhs.wisconsin.gov/disease/respiratory.htm>
- Activity graphs for a variety of respiratory pathogens can be found on the DHS Respiratory Illness Dashboard: <https://www.dhs.wisconsin.gov/disease/laboratory-based-data.htm>
- Activity graphs for a variety of gastrointestinal pathogens can be found on the WSLH website: <http://www.slh.wisc.edu/wcln-surveillance/surveillance/gastropathogen-surveillance/>
- The WSLH SARS-CoV-2 genomic dashboard is available here: <https://dataportal.slh.wisc.edu/sc2dashboard>



To subscribe to this report, email [WCLN@slh.wisc.edu](mailto:WCLN@slh.wisc.edu)