


# Laboratory Surveillance Report

**\*\* For a selection of pathogens, participating Wisconsin clinical laboratories voluntarily report to WSLH on a weekly basis the total number of tests performed, and the number of those tests with positive results.**

**To enhance surveillance activities, and monitor for avian influenza, each week please send:**

- **PCR/Molecular Testing sites:**
  - ◊ **All influenza positive specimens**
  - ◊ Especially, Influenza A specimens:
    - That fail to subtype (Ct <35)
    - **With swine, bovine or avian exposure**
    - With international travel history
- **All Testing Sites:**
  - ◊ **Up to 5** SARS-CoV-2 positive specimens
- **All Enterovirus positive CSF Specimens**



**Respiratory Snapshot:**

- Influenza activity is **low** in Wisconsin (0.4%) and nationally (0.7%)
  - **Influenza A** is the dominant strain circulating (89%)
- Rhinovirus/Enterovirus activity is **high** (22.4%) in Wisconsin
- SARS-CoV-2 activity in Wisconsin is **decreasing** (6.9%)
- *Bordetella pertussis* activity in Wisconsin is **elevated** (3.7%)

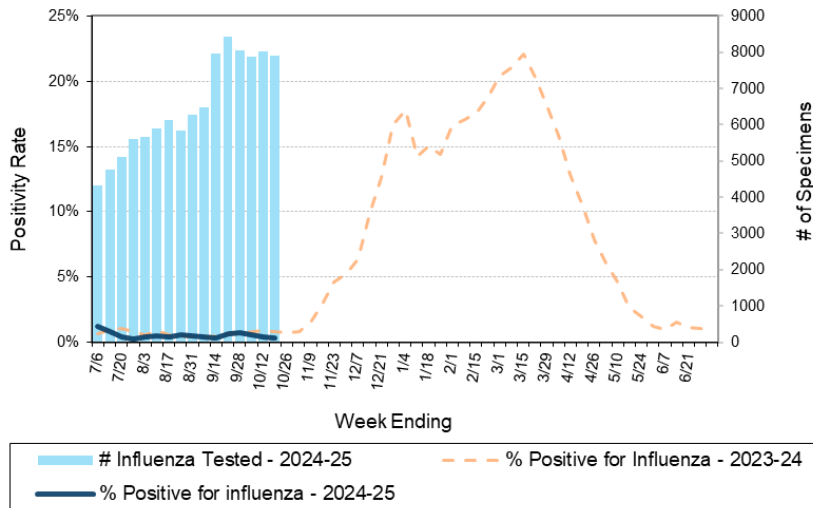
**Enteric Snapshot:**

- Norovirus activity is **elevated** (6.7%)

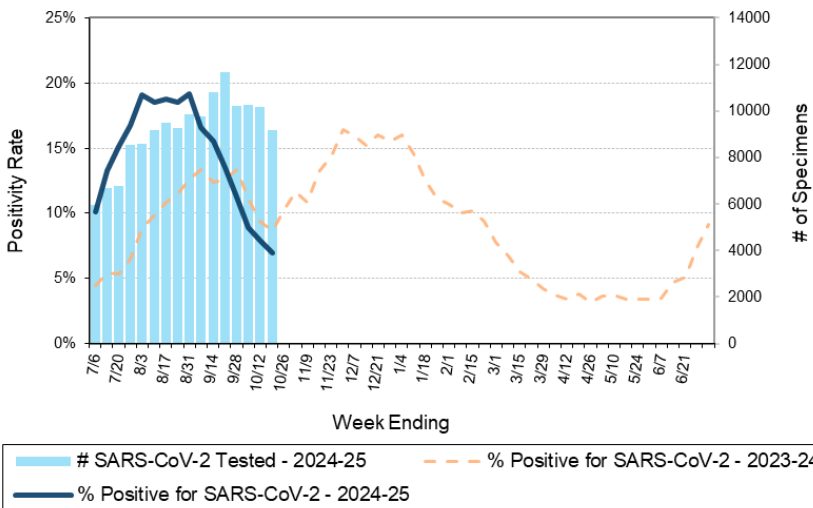
**Other:**

- Group A *Streptococcus* activity in Wisconsin is **moderate** (15.4%).

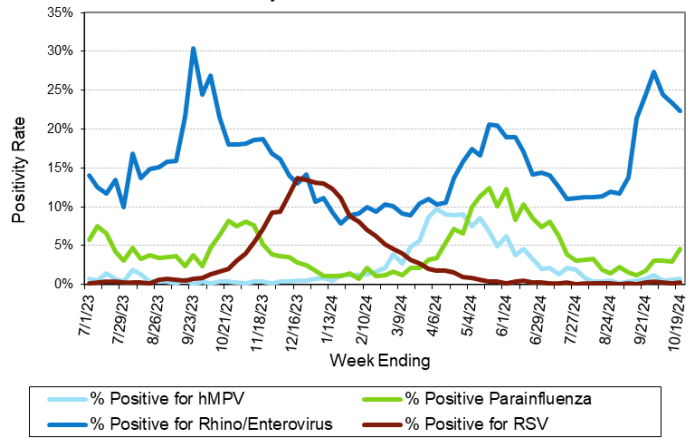
Number Tested and Positivity Rate for **Influenza** by PCR at Wisconsin Laboratories



Number Tested and Positivity Rate for **SARS-CoV-2** by PCR at Wisconsin Laboratories



Positivity Rate of **hMPV, Parainfluenza, Rhino/Enterovirus and RSV** by PCR at Wisconsin Laboratories



# Laboratory Surveillance Report

## Enteric Pathogens

Week Ending 10/19/24

	# Tested	% Positive
Norovirus***	448	6.7%
<i>Campylobacter</i>	596	4.2%
<i>Cryptosporidium</i>	485	1.9%
<i>Giardia</i>	485	1.4%
<i>Salmonella</i>	598	1.2%
<i>Yersinia enterocolitica</i>	489	1.2%
Sapovirus	397	0.8%
STEC	598	0.5%
<i>E. coli</i> 0157	246	0.4%
<i>Plesiomonas shigelloides</i>	444	0.2%
Rotavirus	443	0.2%
<i>Aeromonas</i>	34	0.0%
<i>Shigella/EIEC</i>	592	0.0%
<i>Vibrio</i>	473	0.0%
Adenovirus 40/41	397	0.0%
Astrovirus	397	0.0%
<i>Cyclospora</i>	414	0.0%
<i>Entamoeba histolytica</i>	468	0.0%

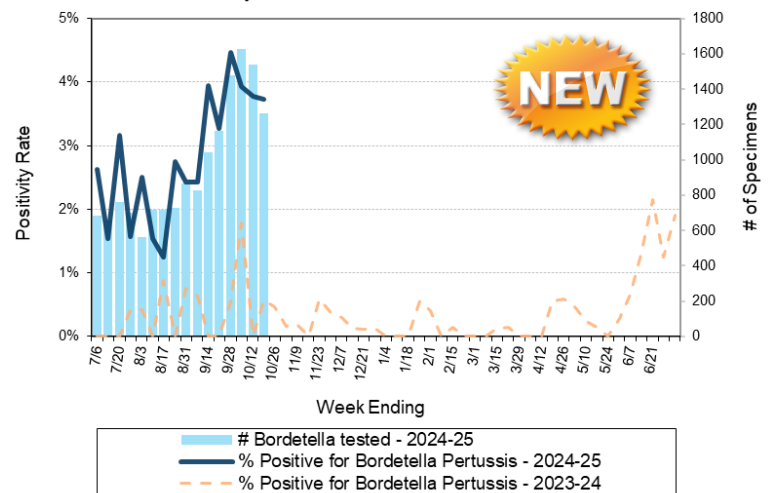
\*\*\*BioMerieux has announced an increased risk of false positive norovirus results with the BioFire FilmArray GI panel, which may increase the statewide norovirus percent positivity \*\*

## Respiratory Pathogens

Week Ending 10/19/24

	# Tested	% Positive
Rhinovirus/Enterovirus	1202	22.4%
SARS-CoV-2	9172	6.9% ↓
Parainfluenza	909	4.6%
<i>Bordetella pertussis</i>	1261	3.7%
Adenovirus	891	1.1%
Human metapneumovirus	883	0.7%
Seasonal coronaviruses	738	0.7%
Influenza	7916	0.4%
RSV	6642	0.3%

Number Tested and Positivity Rate for *Bordetella pertussis* by PCR at Wisconsin Laboratories



## Additional Information

- Additional information on respiratory pathogens can be found on the DHS website: <https://www.dhs.wisconsin.gov/disease/respiratory.htm>
- Activity graphs for a variety of respiratory pathogens can be found on the DHS Respiratory Illness Dashboard: <https://www.dhs.wisconsin.gov/disease/laboratory-based-data.htm>
- Activity graphs for a variety of gastrointestinal pathogens can be found on the WSLH website: <http://www.slh.wisc.edu/wcln-surveillance/surveillance/gastropathogen-surveillance/>
- The WSLH SARS-CoV-2 genomic dashboard is available here: <https://dataportal.slh.wisc.edu/sc2dashboard>



To subscribe to this report, email [WCLN@slh.wisc.edu](mailto:WCLN@slh.wisc.edu)