


Laboratory Surveillance Report

**** For a selection of pathogens, participating Wisconsin clinical laboratories voluntarily report to WSLH on a weekly basis the total number of tests performed, and the number of those tests with positive results.**

To enhance surveillance activities, and monitor for avian influenza, each week please send:

- **PCR/Molecular Testing sites:**
 - ◊ **All influenza positive specimens**
 - ◊ Especially, Influenza A specimens:
 - That fail to subtype (Ct <35)
 - **With swine, bovine or avian exposure**
 - With international travel history
- **All Testing Sites:**
 - ◊ **Up to 5** SARS-CoV-2 positive specimens
- **All Enterovirus positive CSF Specimens**



Respiratory Snapshot:

- Influenza activity is **low** in Wisconsin (1.2%) and nationally (1.3%)
 - **Influenza A** is the dominant strain circulating (92%)
- Rhinovirus/Enterovirus activity is **decreasing**(18.2%) in Wisconsin
- SARS-CoV-2 activity in Wisconsin is **decreasing** (6.0%)
- *Bordetella pertussis* activity in Wisconsin is **elevated** (2.4%)

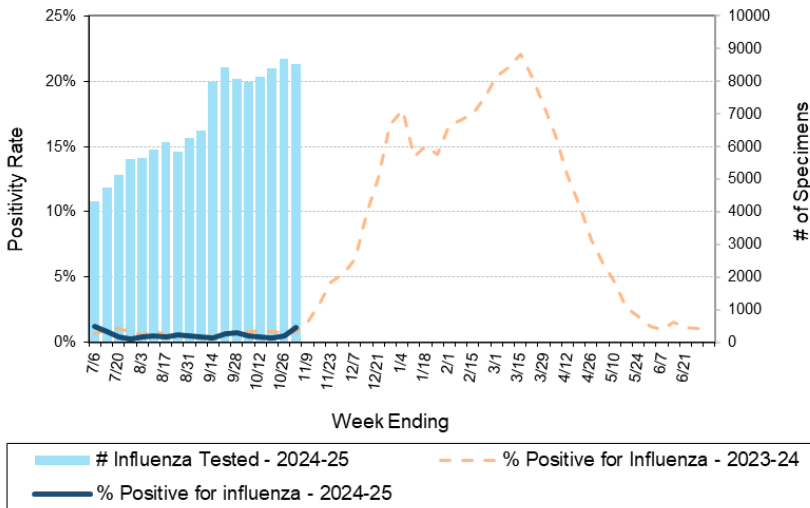
Enteric Snapshot:

- Norovirus activity is **elevated** (9.6%)

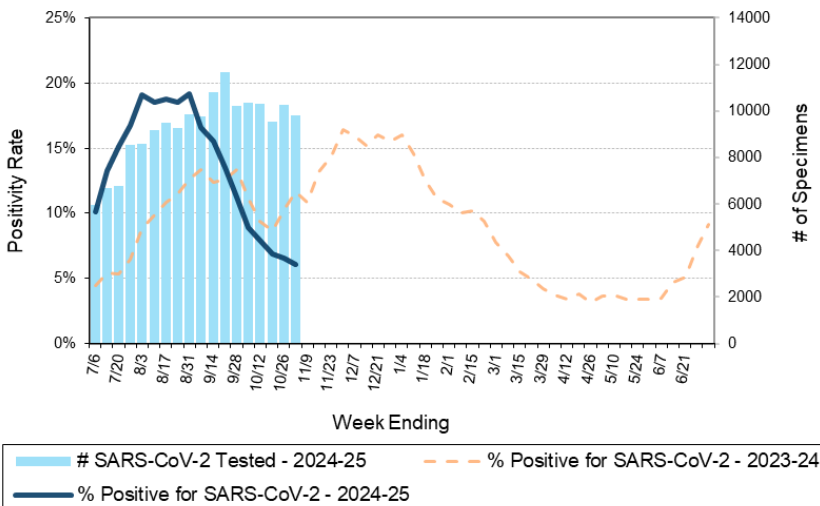
Other:

- Group A *Streptococcus* activity in Wisconsin is **moderate** (14.1%).

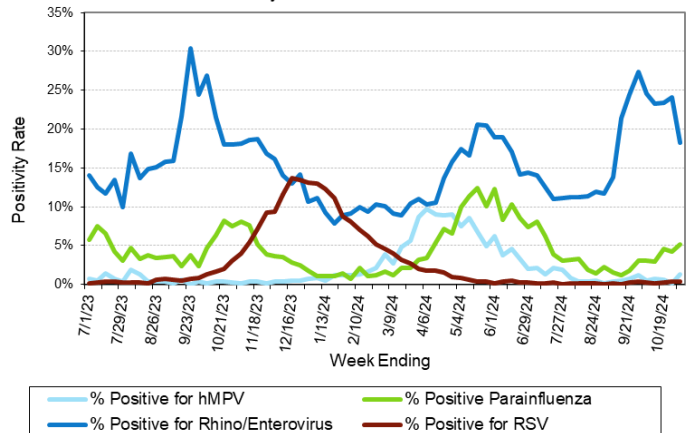
Number Tested and Positivity Rate for **Influenza** by PCR at Wisconsin Laboratories



Number Tested and Positivity Rate for **SARS-CoV-2** by PCR at Wisconsin Laboratories



Positivity Rate of **hMPV, Parainfluenza, Rhino/Enterovirus and RSV** by PCR at Wisconsin Laboratories



Laboratory Surveillance Report

Enteric Pathogens

Week Ending 11/2/24

	# Tested	% Positive
Norovirus***	553	9.6%
<i>Campylobacter</i>	701	4.0%
<i>Salmonella</i>	688	2.0%
Rotavirus	548	1.1%
STEC	701	0.9%
<i>Yersinia enterocolitica</i>	586	0.9%
<i>Giardia</i>	586	0.9%
Adenovirus 40/41	501	0.8%
Sapovirus	502	0.8%
<i>Cryptosporidium</i>	725	0.4%
<i>Shigella/EIEC</i>	650	0.3%
<i>Aeromonas</i>	16	0.0%
<i>E. coli</i> 0157	216	0.0%
<i>Plesiomonas shigelloides</i>	539	0.0%
<i>Vibrio</i>	578	0.0%
Astrovirus	501	0.0%
<i>Cyclospora</i>	509	0.0%
<i>Entamoeba histolytica</i>	578	0.0%

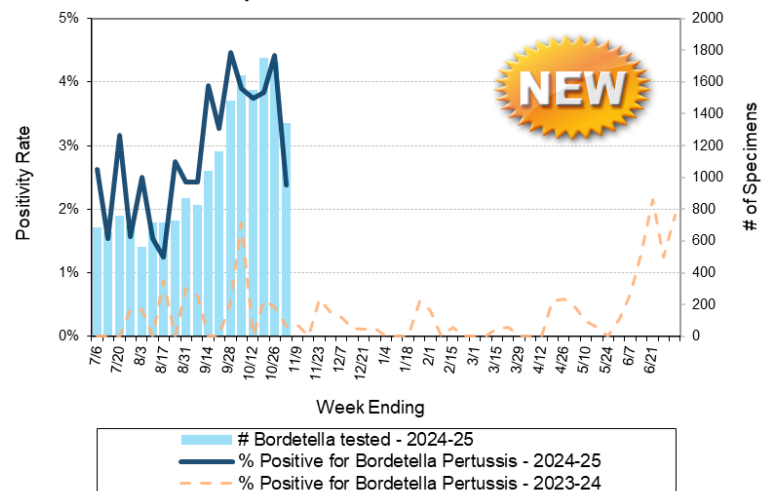
***BioMerieux has announced an increased risk of false positive norovirus results with the BioFire FilmArray GI panel, which may increase the statewide norovirus percent positivity **

Respiratory Pathogens

Week Ending 11/2/24

	# Tested	% Positive
Rhinovirus/Enterovirus	1208	18.2%↓
SARS-CoV-2	9806	6.0%↓
Parainfluenza	1247	5.2%
<i>Bordetella pertussis</i>	1340	2.4%
Adenovirus	1254	1.5%
Human metapneumovirus	1273	1.3%
Influenza	8517	1.2%
Seasonal coronaviruses	1081	0.9%
RSV	7267	0.4%

Number Tested and Positivity Rate for *Bordetella pertussis* by PCR at Wisconsin Laboratories



Additional Information

- Additional information on respiratory pathogens can be found on the DHS website: <https://www.dhs.wisconsin.gov/disease/respiratory.htm>
- Activity graphs for a variety of respiratory pathogens can be found on the DHS Respiratory Illness Dashboard: <https://www.dhs.wisconsin.gov/disease/laboratory-based-data.htm>
- Activity graphs for a variety of gastrointestinal pathogens can be found on the WSLH website: <http://www.slh.wisc.edu/wcln-surveillance/surveillance/gastropathogen-surveillance/>
- The WSLH SARS-CoV-2 genomic dashboard is available here: <https://dataportal.slh.wisc.edu/sc2dashboard>



To subscribe to this report, email WCLN@slh.wisc.edu