

# Laboratory Surveillance Report

**\*\* For a selection of pathogens, participating Wisconsin clinical laboratories voluntarily report to WSLH on a weekly basis the total number of tests performed, and the number of those tests with positive results.**

**To enhance surveillance activities, and monitor for avian influenza, each week please send:**

- **PCR/Molecular Testing sites:**
  - ◊ **All influenza positive specimens**
  - ◊ Especially, Influenza A specimens:
    - That fail to subtype (Ct <35)
    - **With swine, bovine or avian exposure**
    - With international travel history
- **All Testing Sites:**
  - ◊ **Up to 5** SARS-CoV-2 positive specimens
- **All Enterovirus positive CSF Specimens**

**Respiratory Snapshot:**

- Influenza activity is **low** in Wisconsin (1.4%) and nationally (2.1%)
  - **Influenza A** is the dominant strain circulating (93%)
- Rhinovirus/Enterovirus activity is **high** (20.2%) in Wisconsin
- SARS-CoV-2 (5.7%) and parainfluenza (6.0%) activities in Wisconsin are **moderate**
- *Bordetella pertussis* activity in Wisconsin is **elevated** (3.0%)

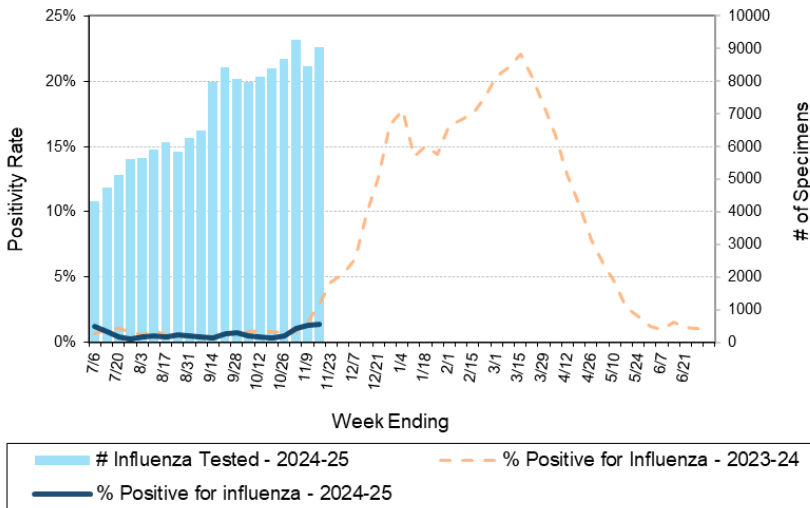
**Enteric Snapshot:**

- Norovirus activity is **elevated** (9.6%)

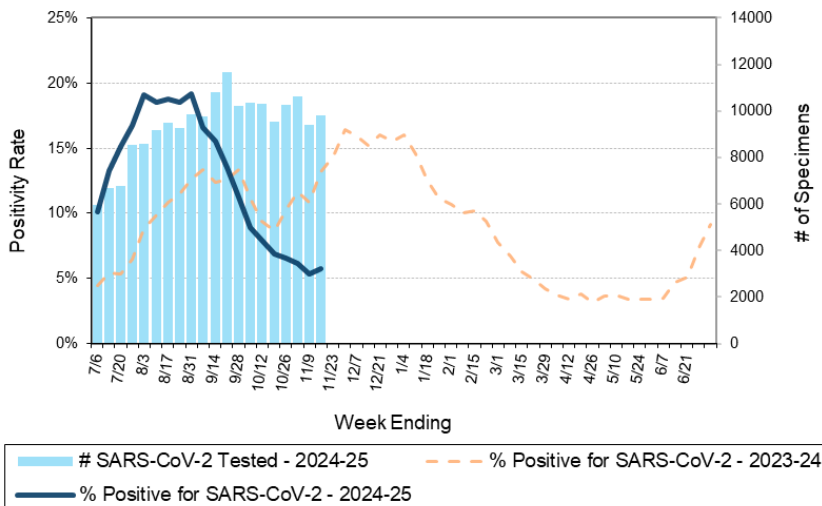
**Other:**

- Group A *Streptococcus* activity in Wisconsin is **moderate** (15.7%).

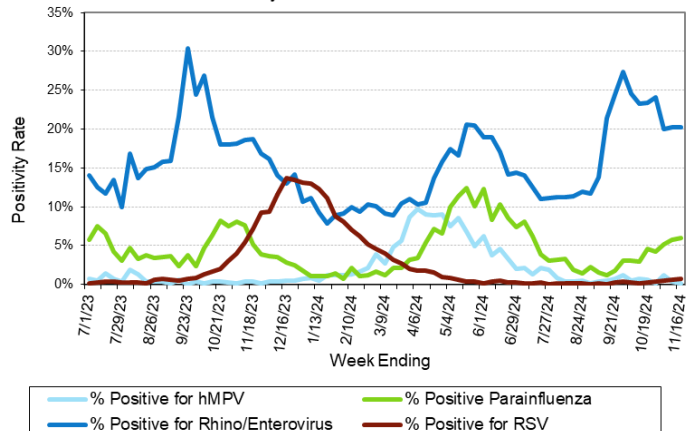
Number Tested and Positivity Rate for **Influenza** by PCR at Wisconsin Laboratories



Number Tested and Positivity Rate for **SARS-CoV-2** by PCR at Wisconsin Laboratories



Positivity Rate of **hMPV, Parainfluenza, Rhino/Enterovirus and RSV** by PCR at Wisconsin Laboratories



# Laboratory Surveillance Report

## Enteric Pathogens

Week Ending 11/16/24

	# Tested	% Positive
Norovirus***	572	12.8%
<i>Campylobacter</i>	671	3.0%
STEC	671	1.6%
<i>Salmonella</i>	671	1.5%
<i>E. coli</i> 0157	248	0.8%
<i>Yersinia enterocolitica</i>	593	0.8%
<i>Giardia</i>	611	0.8%
Rotavirus	564	0.7%
Adenovirus 40/41	523	0.6%
Sapovirus	523	0.6%
<i>Cryptosporidium</i>	611	0.3%
<i>Plesiomonas shigelloides</i>	552	0.2%
<i>Entamoeba histolytica</i>	600	0.2%
<i>Aeromonas</i>	38	0.0%
<i>Shigella/EIEC</i>	671	0.0%
<i>Vibrio</i>	582	0.0%
Astrovirus	523	0.0%
<i>Cyclospora</i>	534	0.0%

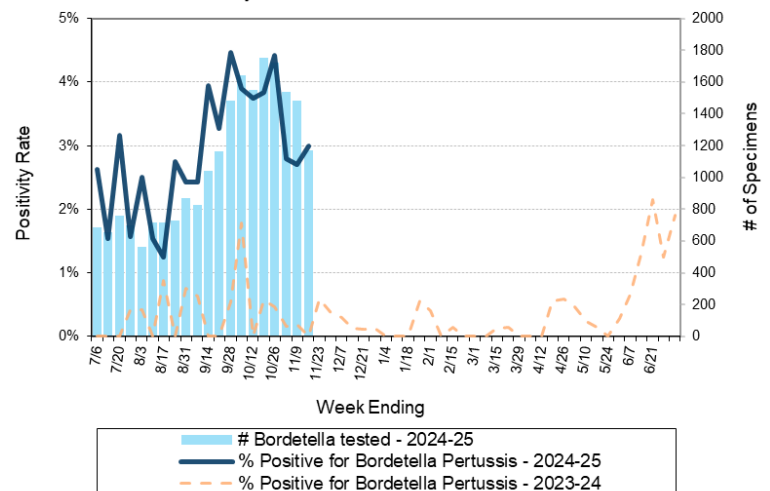
\*\*\*BioMerieux has announced an increased risk of false positive norovirus results with the BioFire FilmArray GI panel, which may increase the statewide norovirus percent positivity \*\*

## Respiratory Pathogens

Week Ending 11/16/24

	# Tested	% Positive
Rhinovirus/Enterovirus	1530	20.0%
Parainfluenza	1115	6.0%
SARS-CoV-2	9800	5.7%
<i>Bordetella pertussis</i>	1169	3.0%
Adenovirus	1104	1.6%
Influenza	9054	1.4%
Seasonal coronaviruses	970	1.4%
RSV	7465	0.8%
Human metapneumovirus	1122	0.2%

Number Tested and Positivity Rate for *Bordetella pertussis* by PCR at Wisconsin Laboratories



## Additional Information

- Additional information on respiratory pathogens can be found on the DHS website: <https://www.dhs.wisconsin.gov/disease/respiratory.htm>
- Activity graphs for a variety of respiratory pathogens can be found on the DHS Respiratory Illness Dashboard: <https://www.dhs.wisconsin.gov/disease/laboratory-based-data.htm>
- Activity graphs for a variety of gastrointestinal pathogens can be found on the WSLH website: <http://www.slh.wisc.edu/wcln-surveillance/surveillance/gastropathogen-surveillance/>
- The WSLH SARS-CoV-2 genomic dashboard is available here: <https://dataportal.slh.wisc.edu/sc2dashboard>

To subscribe to this report, email [WCLN@slh.wisc.edu](mailto:WCLN@slh.wisc.edu)