

# Laboratory Surveillance Report

\*\* For a selection of pathogens, participating Wisconsin clinical laboratories voluntarily report to WSLH on a weekly basis the total number of tests performed, and the number of those tests with positive results.

**To Enhance Surveillance Activities, Please Send:**

- All Testing Sites:**
  - ◇ Influenza A specimens:
    - With swine, bovine or poultry exposure
    - With international travel history
  - ◇ [Up to 5 SARS-CoV-2 positive specimens per week](#)
  - ◇ [All Enterovirus positive CSF specimens](#)
- PCR/Molecular Testing Sites:**
  - ◇ [One Influenza-related hospitalization per week](#)
  - ◇ Influenza A specimens:
    - That fail to subtype (Ct <35)



**Respiratory Snapshot:**

- Influenza activity is **increasing** in Wisconsin (5.5%) and nationally (9.0%)
  - **Influenza A** is the dominant strain circulating (96%)
  - Influenza **A(H3N2)** (54%) and **A(H1N1)pdm09** (46%) are co-circulating this season
- SARS-CoV-2 (8.0%) and RSV (4.3%) activities are **increasing** in Wisconsin
- Rhinovirus/Enterovirus activity in Wisconsin is **decreasing** (14.8%)
- *Bordetella pertussis* activity in Wisconsin is **elevated** (3.0%)

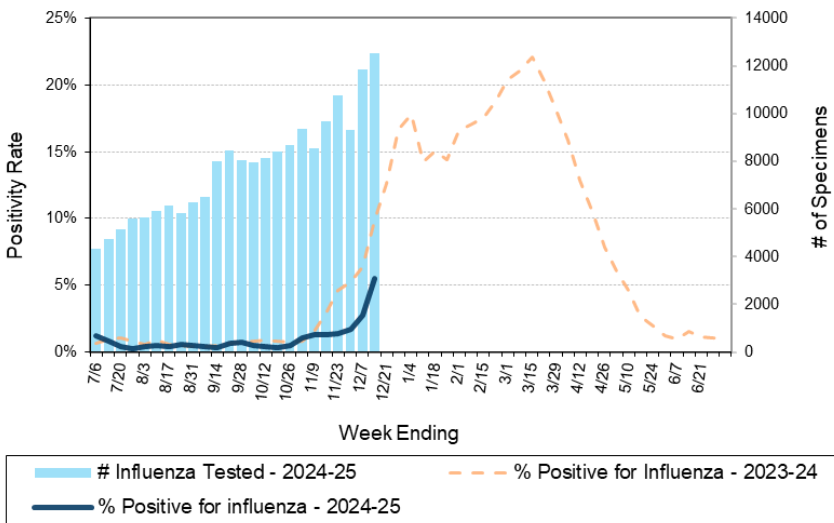
**Enteric Snapshot:**

- Norovirus activity is **high** (30.8%)

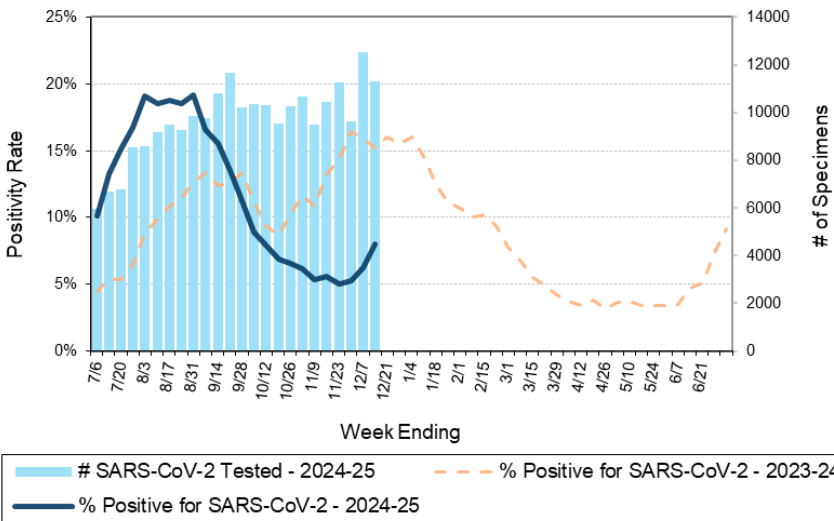
**Other:**

- Group A *Streptococcus* activity in Wisconsin is **high** (18.1%).

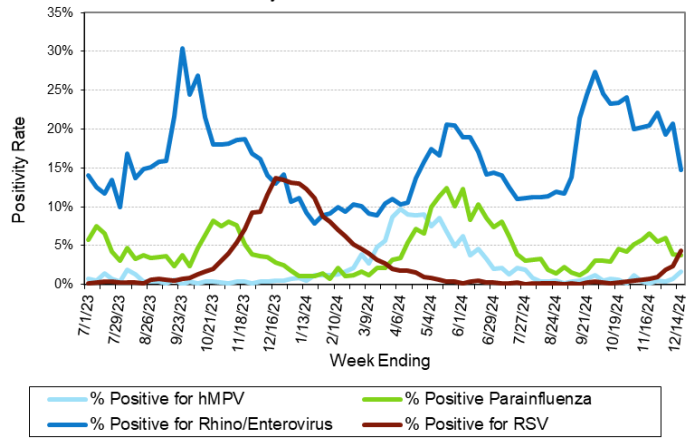
Number Tested and Positivity Rate for **Influenza** by PCR at Wisconsin Laboratories



Number Tested and Positivity Rate for **SARS-CoV-2** by PCR at Wisconsin Laboratories



Positivity Rate of **hMPV, Parainfluenza, Rhino/Enterovirus and RSV** by PCR at Wisconsin Laboratories



# Laboratory Surveillance Report

## Enteric Pathogens

Week Ending 12/14/24

	# Tested	% Positive
Norovirus***	763	30.8% ↑
<i>Campylobacter</i>	889	2.8%
<i>Salmonella</i>	889	1.3%
Sapovirus	678	1.3%
<i>Giardia</i>	780	1.2%
<i>Cryptosporidium</i>	780	0.9%
STEC	889	0.7%
Adenovirus 40/41	678	0.7%
<i>Shigella/EIEC</i>	852	0.6%
Rotavirus	730	0.5%
<i>Vibrio</i>	747	0.3%
<i>Plesiomonas shigelloides</i>	715	0.1%
<i>Yersinia enterocolitica</i>	767	0.1%
Astrovirus	678	0.1%
Aeromonas	53	0.0%
<i>E. coli</i> 0157	354	0.0%
<i>Cyclospora</i>	698	0.0%
<i>Entamoeba histolytica</i>	760	0.0%

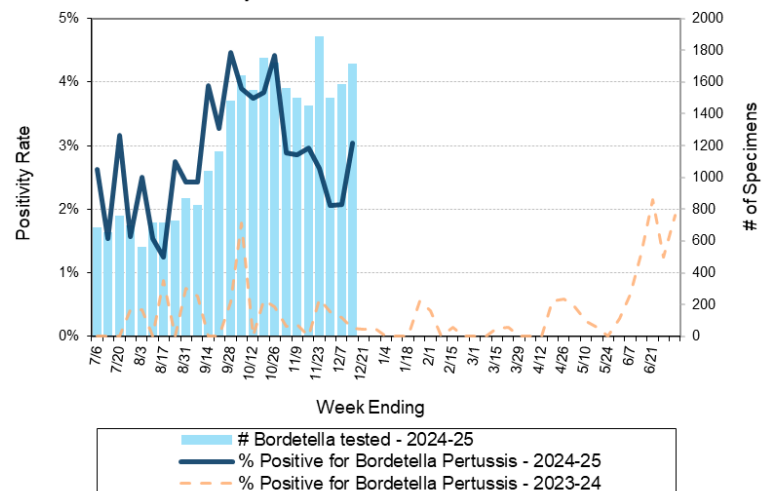
\*\*\*BioMerieux has announced an increased risk of false positive norovirus results with the BioFire FilmArray GI panel, which may increase the statewide norovirus percent positivity \*\*

## Respiratory Pathogens

Week Ending 12/14/24

	# Tested	% Positive
Rhinovirus/Enterovirus	2419	14.8% ↓
SARS-CoV-2	11288	8.0% ↑
Influenza	12529	5.5% ↑
Seasonal coronaviruses	1062	4.6% ↑
RSV	10003	4.3% ↑
Parainfluenza	1570	3.8%
<i>Bordetella pertussis</i>	1714	3.0%
Human metapneumovirus	1562	1.7%
Adenovirus	1529	1.2%

Number Tested and Positivity Rate for *Bordetella pertussis* by PCR at Wisconsin Laboratories



## Additional Information

- Additional information on respiratory pathogens can be found on the DHS website: <https://www.dhs.wisconsin.gov/disease/respiratory.htm>
- Activity graphs for a variety of respiratory pathogens can be found on the DHS Respiratory Illness Dashboard: <https://www.dhs.wisconsin.gov/disease/laboratory-based-data.htm>
- Activity graphs for a variety of gastrointestinal pathogens can be found on the WSLH website: <http://www.slh.wisc.edu/wcln-surveillance/surveillance/gastropathogen-surveillance/>
- The WSLH SARS-CoV-2 genomic dashboard is available here: <https://dataportal.slh.wisc.edu/sc2dashboard>

To subscribe to this report, email [WCLN@slh.wisc.edu](mailto:WCLN@slh.wisc.edu)