

# Laboratory Surveillance Report

\*\* For a selection of pathogens, participating Wisconsin clinical laboratories voluntarily report to WSLH on a weekly basis the total number of tests performed, and the number of those tests with positive results.

**To Enhance Surveillance Activities, Please Send:**

- All Testing Sites:**
  - ◇ Influenza A specimens:
    - With swine, bovine or poultry exposure
    - With international travel history
  - ◇ Up to 5 SARS-CoV-2 positive specimens per week
  - ◇ All Enterovirus positive CSF specimens
- PCR/Molecular Testing Sites:**
  - ◇ One Influenza-related hospitalization per week
  - ◇ Influenza A specimens:
    - That fail to subtype (Ct <35)



**Respiratory Snapshot:**

- Influenza activity is **increasing** in Wisconsin (14.2%) and nationally (18.7%)
  - **Influenza A** is the dominant strain circulating (98%)
  - Influenza **A(H3N2)** (59%) and **A(H1N1)pdm09** (41%) are co-circulating this season
- SARS-CoV-2 (10.4%) and RSV (11.4%) activities are **increasing** in Wisconsin
- Rhinovirus/Enterovirus activity in Wisconsin is **decreasing** (14.6%)
- *Bordetella pertussis* activity in Wisconsin is **elevated** (1.6%)

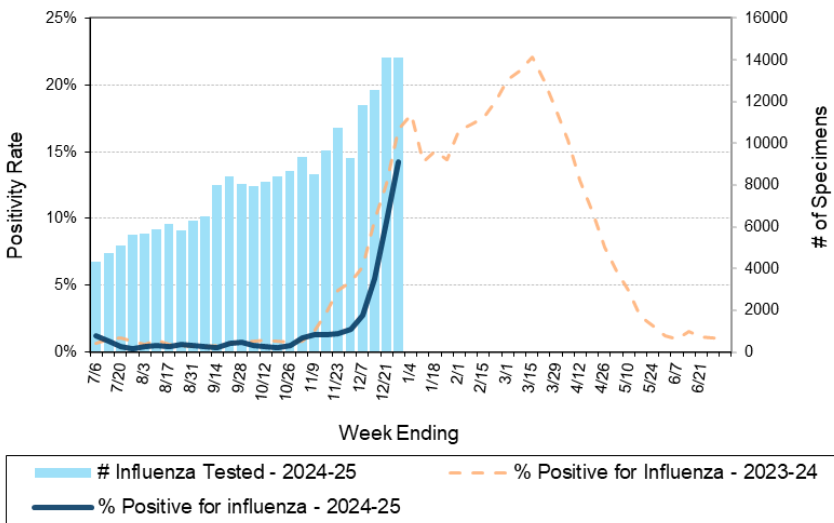
**Enteric Snapshot:**

- Norovirus activity is **high** (41.4%)

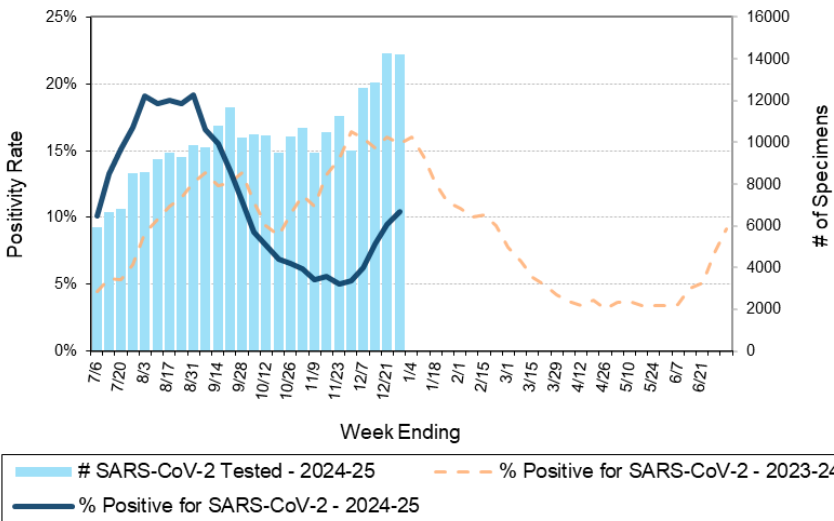
**Other:**

- Group A *Streptococcus* activity in Wisconsin is **high** (15.8%).

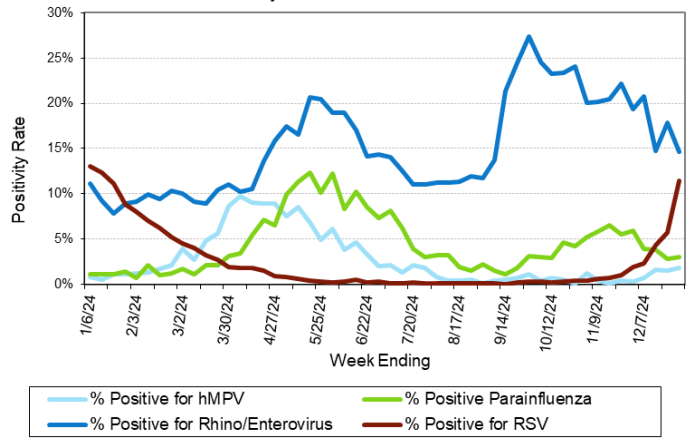
Number Tested and Positivity Rate for **Influenza** by PCR at Wisconsin Laboratories



Number Tested and Positivity Rate for **SARS-CoV-2** by PCR at Wisconsin Laboratories



Positivity Rate of **hMPV, Parainfluenza, Rhino/Enterovirus and RSV** by PCR at Wisconsin Laboratories



# Laboratory Surveillance Report

## Enteric Pathogens

Week Ending 12/28/24

	# Tested	% Positive
Norovirus***	606	41.4%
<i>Campylobacter</i>	722	1.8%
Adenovirus 40/41	505	1.2%
Sapovirus	505	1.2%
Astrovirus	505	1.0%
STEC	722	0.6%
<i>Yersinia enterocolitica</i>	599	0.5%
<i>Cryptosporidium</i>	568	0.5%
<i>Giardia</i>	568	0.5%
<i>Salmonella</i>	722	0.4%
<i>Shigella/EIEC</i>	706	0.3%
<i>Vibrio</i>	583	0.2%
<i>Aeromonas</i>	55	0.0%
<i>E. coli</i> 0157	286	0.0%
<i>Plesiomonas shigelloides</i>	533	0.0%
Rotavirus	571	0.0%
<i>Cyclospora</i>	521	0.0%
<i>Entamoeba histolytica</i>	552	0.0%

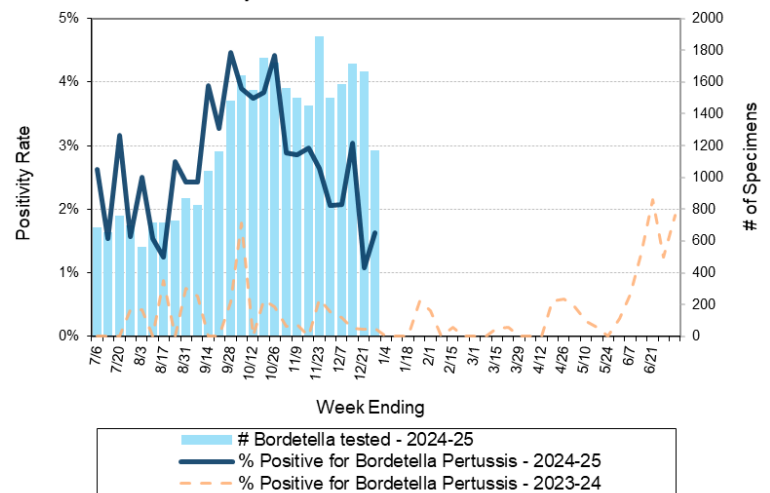
\*\*\*BioMerieux has announced an increased risk of false positive norovirus results with the BioFire FilmArray GI panel, which may increase the statewide norovirus percent positivity \*\*

## Respiratory Pathogens

Week Ending 12/28/24

	# Tested	% Positive
Rhinovirus/Enterovirus	1953	14.6%
Influenza	14098	14.2% ↑
RSV	11092	11.4% ↑
SARS-CoV-2	14194	10.4% ↑
Seasonal coronaviruses	1217	6.6%
Parainfluenza	1374	3.0%
Human metapneumovirus	1327	1.8%
Adenovirus	1300	1.8%
<i>Bordetella pertussis</i>	1171	1.6%

Number Tested and Positivity Rate for *Bordetella pertussis* by PCR at Wisconsin Laboratories



## Additional Information

- Additional information on respiratory pathogens can be found on the DHS website: <https://www.dhs.wisconsin.gov/disease/respiratory.htm>
- Activity graphs for a variety of respiratory pathogens can be found on the DHS Respiratory Illness Dashboard: <https://www.dhs.wisconsin.gov/disease/laboratory-based-data.htm>
- Activity graphs for a variety of gastrointestinal pathogens can be found on the WSLH website: <http://www.slh.wisc.edu/wcln-surveillance/surveillance/gastropathogen-surveillance/>
- The WSLH SARS-CoV-2 genomic dashboard is available here: <https://dataportal.slh.wisc.edu/sc2dashboard>

To subscribe to this report, email [WCLN@slh.wisc.edu](mailto:WCLN@slh.wisc.edu)