

Laboratory Surveillance Report

**** For a selection of pathogens, participating Wisconsin clinical laboratories voluntarily report to WSLH on a weekly basis the total number of tests performed, and the number of those tests with positive results.**

To Enhance Surveillance Activities, Please Send:

- **All Testing Sites:**
 - ◊ **Three influenza-related hospitalizations per week**
 - ◊ **ALL** Influenza A positive specimens:
 - **From patients admitted to the ICU** NEW
 - **With swine, bovine or poultry exposure**
 - With international travel history
 - That fail to subtype as H1 or H3 (Ct <35)
 - ◊ **Up to 5 SARS-CoV-2 positive specimens per week**
 - ◊ **All Enterovirus positive CSF specimens**

Respiratory Snapshot:

- Influenza activity is **increasing** in Wisconsin (19.7%) and nationally (18.8%)
 - **Influenza A** is the dominant strain circulating (97%)
 - Influenza **A(H3N2)** (58%) and **A(H1N1)pdm09** (43%) are co-circulating this season
- SARS-CoV-2 (9.7%), Rhinovirus/Enterovirus (9.4%) and RSV (8.2%) activities are **high** in Wisconsin
- *Bordetella pertussis* activity in Wisconsin is **elevated** (1.4%)

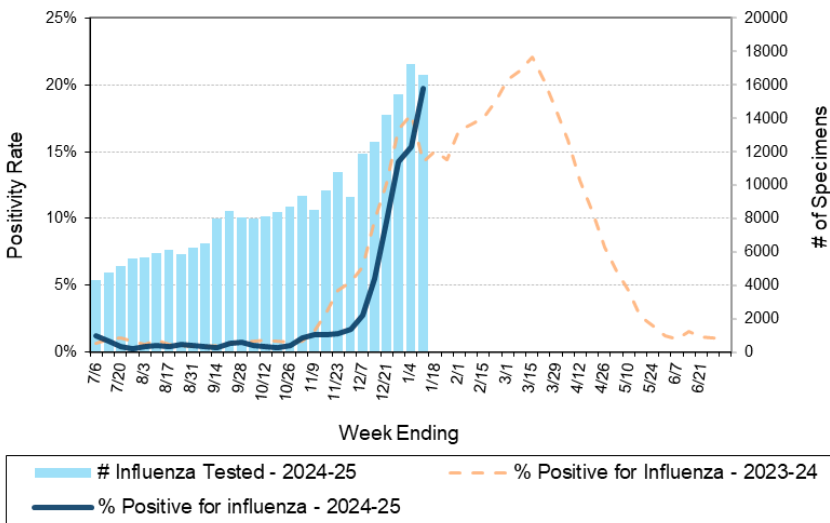
Enteric Snapshot:

- Norovirus activity is **high** (34.8%)

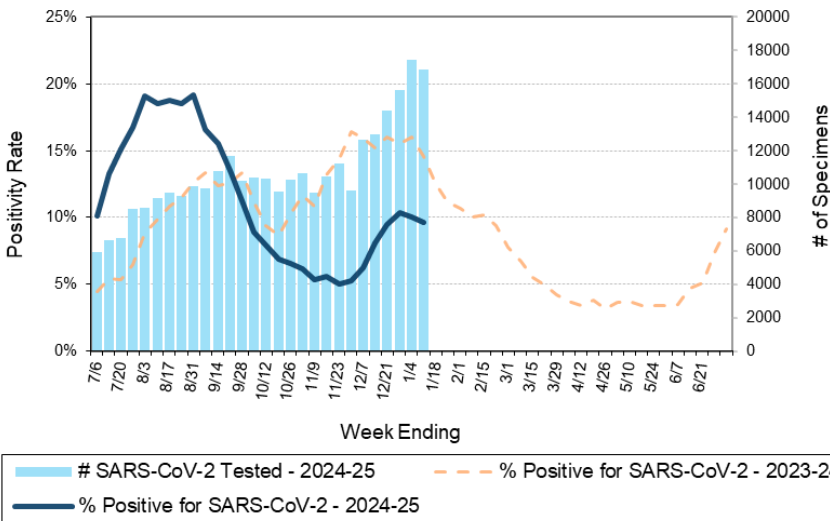
Other:

- Group A *Streptococcus* activity in Wisconsin is **high** (16.7%).

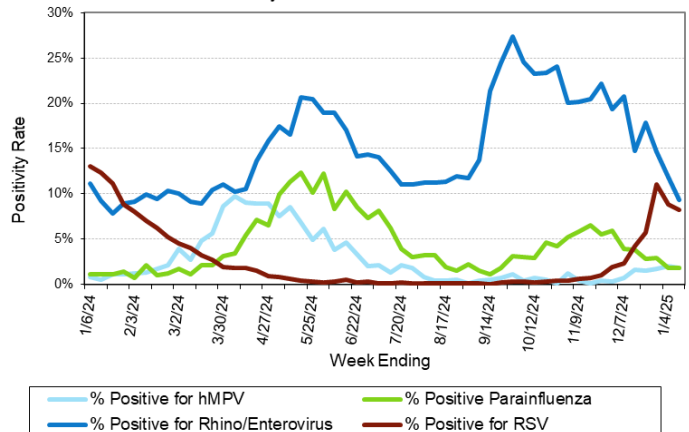
Number Tested and Positivity Rate for **Influenza** by PCR at Wisconsin Laboratories



Number Tested and Positivity Rate for **SARS-CoV-2** by PCR at Wisconsin Laboratories



Positivity Rate of **hMPV, Parainfluenza, Rhino/Enterovirus and RSV** by PCR at Wisconsin Laboratories



Laboratory Surveillance Report

Enteric Pathogens

Week Ending 1/11/25

	# Tested	% Positive
Norovirus***	687	34.8%
<i>Campylobacter</i>	747	2.8%
<i>Yersinia enterocolitica</i>	652	1.5%
<i>Salmonella</i>	747	1.1%
STEC	747	1.1%
Sapovirus	581	1.0%
<i>Giardia</i>	652	0.9%
Astrovirus	581	0.5%
Adenovirus 40/41	581	0.3%
Rotavirus	615	0.3%
<i>Plesiomonas shigelloides</i>	618	0.2%
<i>Vibrio</i>	652	0.2%
<i>Cryptosporidium</i>	652	0.2%
<i>Shigella/EIEC</i>	740	0.1%
<i>Aeromonas</i>	60	0.0%
<i>E. coli</i> 0157	293	0.0%
<i>Cyclospora</i>	581	0.0%
<i>Entamoeba histolytica</i>	652	0.0%

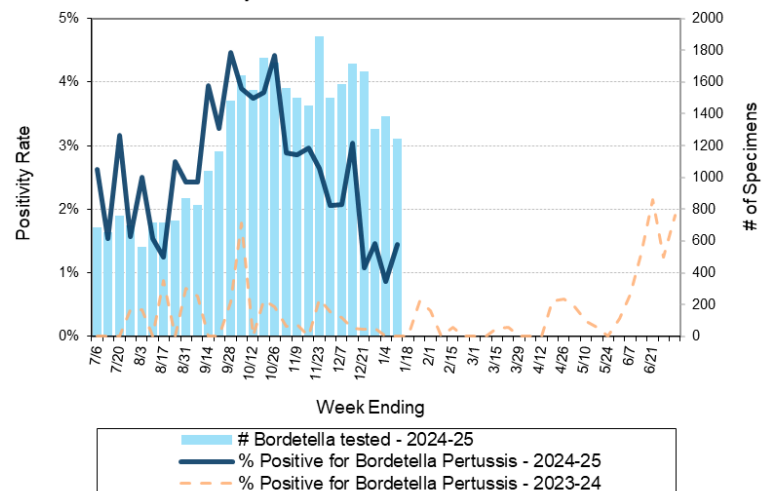
***BioMerieux has announced an increased risk of false positive norovirus results with the BioFire FilmArray GI panel, which may increase the statewide norovirus percent positivity **

Respiratory Pathogens

Week Ending 1/11/25

	# Tested	% Positive
Influenza	16623	19.7% ↑
SARS-CoV-2	16879	9.7%
Rhinovirus/Enterovirus	2148	9.4%
RSV	13667	8.2%
Seasonal coronaviruses	1349	6.2%
Parainfluenza	1526	1.8%
Human metapneumovirus	1526	1.8%
Adenovirus	1500	1.4%
<i>Bordetella pertussis</i>	1246	1.4%

Number Tested and Positivity Rate for *Bordetella pertussis* by PCR at Wisconsin Laboratories



Additional Information

- Additional information on respiratory pathogens can be found on the DHS website: <https://www.dhs.wisconsin.gov/disease/respiratory.htm>
- Activity graphs for a variety of respiratory pathogens can be found on the DHS Respiratory Illness Dashboard: <https://www.dhs.wisconsin.gov/disease/laboratory-based-data.htm>
- Activity graphs for a variety of gastrointestinal pathogens can be found on the WSLH website: <http://www.slh.wisc.edu/wcln-surveillance/surveillance/gastropathogen-surveillance/>
- The WSLH SARS-CoV-2 genomic dashboard is available here: <https://dataportal.slh.wisc.edu/sc2dashboard>

To subscribe to this report, email WCLN@slh.wisc.edu