

# Laboratory Surveillance Report

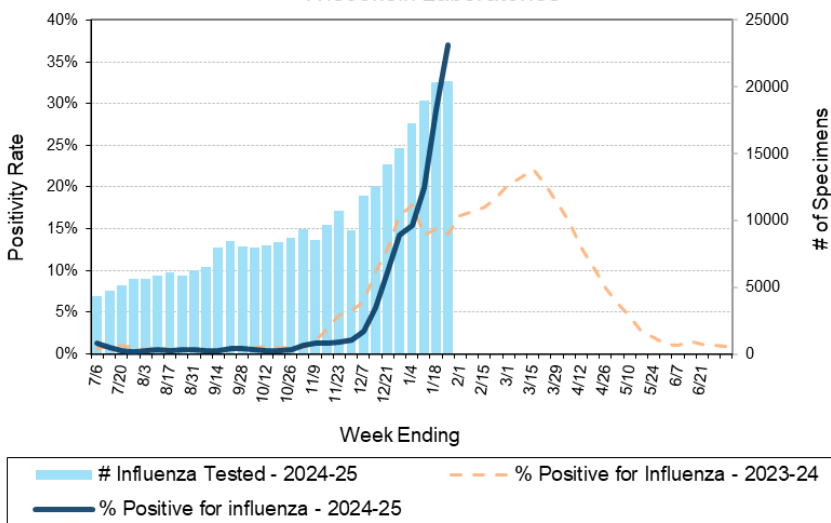
\*\* For a selection of pathogens, participating Wisconsin clinical laboratories voluntarily report to WSLH on a weekly basis the total number of tests performed, and the number of those tests with positive results.

## To Enhance Surveillance Activities, Please Send:

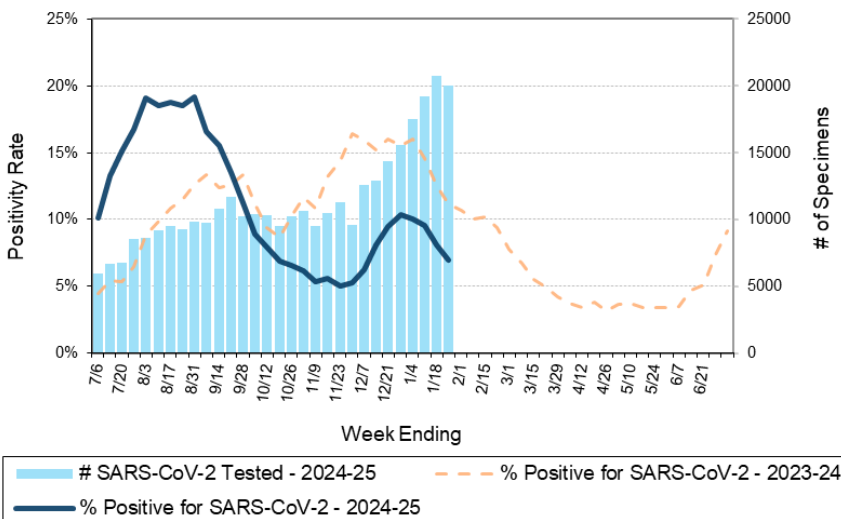
- **All Testing Sites:**
  - ◇ **Three influenza-related hospitalizations per week**
  - ◇ **ALL** Influenza A positive specimens:
    - **From patients admitted to the ICU**
    - **With swine, bovine or poultry exposure**
    - With international travel history
    - That fail to subtype as H1 or H3 (Ct <35)
  - ◇ **Up to 5 SARS-CoV-2 positive specimens per week**
  - ◇ **All Enterovirus positive CSF specimens**



Number Tested and Positivity Rate for **Influenza** by PCR at Wisconsin Laboratories



Number Tested and Positivity Rate for **SARS-CoV-2** by PCR at Wisconsin Laboratories



## Respiratory Snapshot:

- Influenza activity is **increasing** in Wisconsin (37.0%) and nationally (29.4%)
  - **Influenza A** is the dominant strain circulating (96%)
  - Influenza **A(H3N2)** (50%) and **A(H1N1)pdm09** (50%) are co-circulating this season
- RSV (8.9%) activity is **high** in Wisconsin
- SARS-CoV-2 (6.9%), Rhinovirus/Enterovirus (8.3%) activities are **decreasing** in Wisconsin

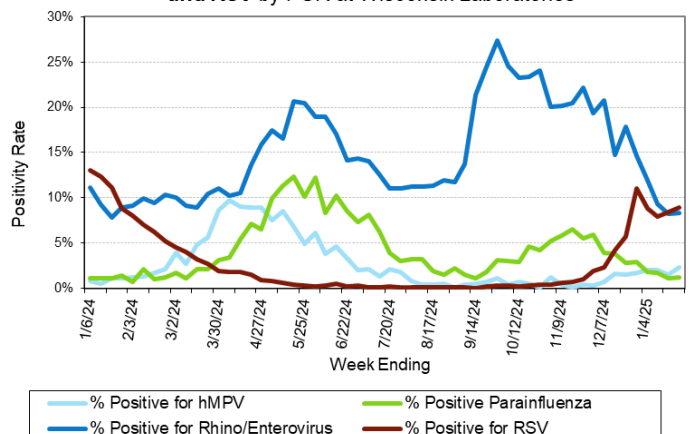
## Enteric Snapshot:

- Norovirus activity is **high** (30.0%)

## Other:

- Group A *Streptococcus* activity in Wisconsin is **high** (16.6%).

Positivity Rate of **hMPV, Parainfluenza, Rhino/Enterovirus and RSV** by PCR at Wisconsin Laboratories



# Laboratory Surveillance Report

## Enteric Pathogens

Week Ending 1/25/25

	# Tested	% Positive
Norovirus***	800	30.0%
<i>Campylobacter</i>	823	1.5%
Sapovirus	669	1.3%
<i>Giardia</i>	721	0.7%
<i>Salmonella</i>	830	0.6%
STEC	823	0.5%
<i>Shigella/EIEC</i>	810	0.5%
<i>Yersinia enterocolitica</i>	751	0.4%
Rotavirus	733	0.4%
<i>Cryptosporidium</i>	721	0.4%
Adenovirus 40/41	669	0.3%
Astrovirus	669	0.3%
<i>Plesiomonas shigelloides</i>	698	0.1%
<i>Entamoeba histolytica</i>	721	0.1%
Aeromonas	58	0.0%
<i>E. coli</i> 0157	286	0.0%
<i>Vibrio</i>	751	0.0%
<i>Cyclospora</i>	669	0.0%

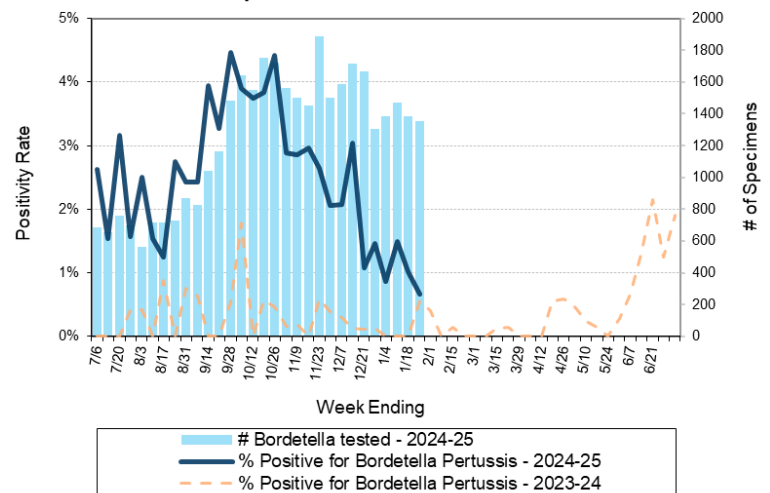
\*\*\*BioMerieux has announced an increased risk of false positive norovirus results with the BioFire FilmArray GI panel, which may increase the statewide norovirus percent positivity \*\*

## Respiratory Pathogens

Week Ending 1/25/25

	# Tested	% Positive
Influenza	20400	37.0% ↑
RSV	17695	8.9%
Rhinovirus/Enterovirus	2302	8.3%
SARS-CoV-2	20026	6.9% ↓
Seasonal coronaviruses	1375	5.3%
Human metapneumovirus	1622	2.3%
Adenovirus	1590	2.1%
Parainfluenza	1579	1.3%
<i>Bordetella pertussis</i>	1352	0.7%

Number Tested and Positivity Rate for *Bordetella pertussis* by PCR at Wisconsin Laboratories



## Additional Information



- Additional Information on avian influenza testing and influenza surveillance at WSLH: <https://www.slh.wisc.edu/clinical/diseases/h5n1-highly-pathogenic-avian-influenza-update/>
- Additional information on respiratory pathogens can be found on the DHS website: <https://www.dhs.wisconsin.gov/disease/respiratory.htm>
- Activity graphs for a variety of respiratory pathogens can be found on the DHS Respiratory Illness Dashboard: <https://www.dhs.wisconsin.gov/disease/laboratory-based-data.htm>
- Activity graphs for a variety of gastrointestinal pathogens can be found on the WSLH website: <http://www.slh.wisc.edu/wcln-surveillance/surveillance/gastropathogen-surveillance/>

To subscribe to this report, email [WCLN@slh.wisc.edu](mailto:WCLN@slh.wisc.edu)