


Laboratory Surveillance Report

** For a selection of pathogens, participating Wisconsin clinical laboratories voluntarily report to WSLH on a weekly basis the total number of tests performed, and the number of those tests with positive results.

To Enhance Surveillance Activities, Please Send:

- All Testing Sites:**
 - ◇ **Three influenza-related hospitalizations per week**
 - ◇ **ALL** Influenza A positive specimens:
 - **From patients admitted to the ICU** 
 - **With swine, bovine or poultry exposure**
 - **With international travel history**
 - **That fail to subtype as H1 or H3 (Ct <35)**
 - ◇ **Up to 5 SARS-CoV-2 positive specimens per week**
 - ◇ **All Enterovirus positive CSF specimens**

Respiratory Snapshot:

- Influenza activity is **high** in Wisconsin (38.0%) and nationally (31.6%)
 - **Influenza A** is the dominant strain circulating (95%)
 - Influenza **A(H1N1)pdm09** (55%) and **A(H3N2)** (45%) and are co-circulating this season
- RSV (8.3%) activity is **high** in Wisconsin
- SARS-CoV-2 (5.6%), Rhinovirus/Enterovirus (7.2%) activities are **decreasing** in Wisconsin

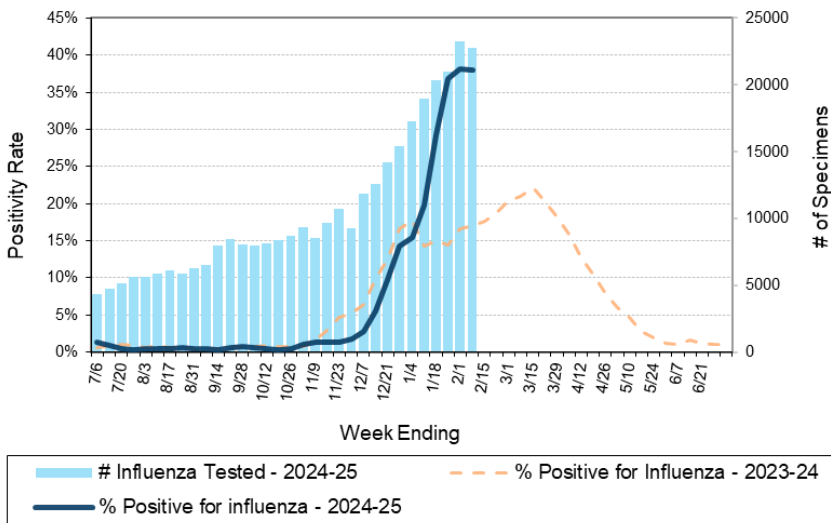
Enteric Snapshot:

- Norovirus activity is **high** (27.5%)

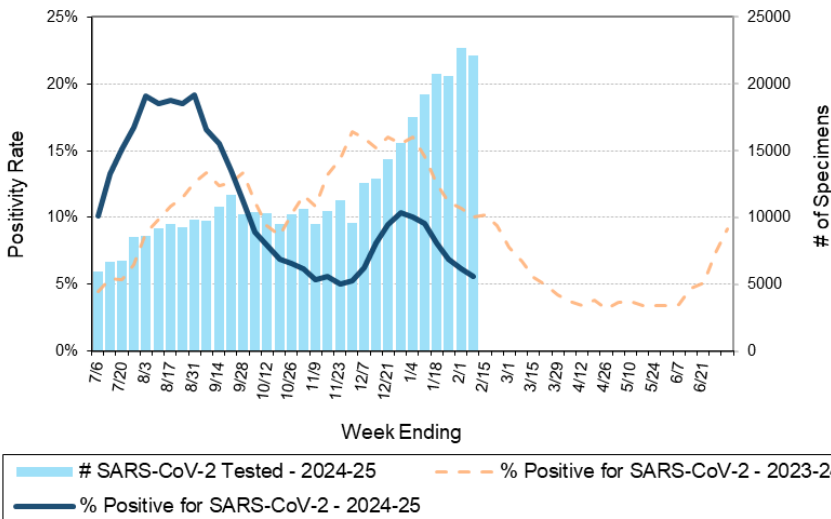
Other:

- Group A *Streptococcus* activity in Wisconsin is **high** (18.9%).

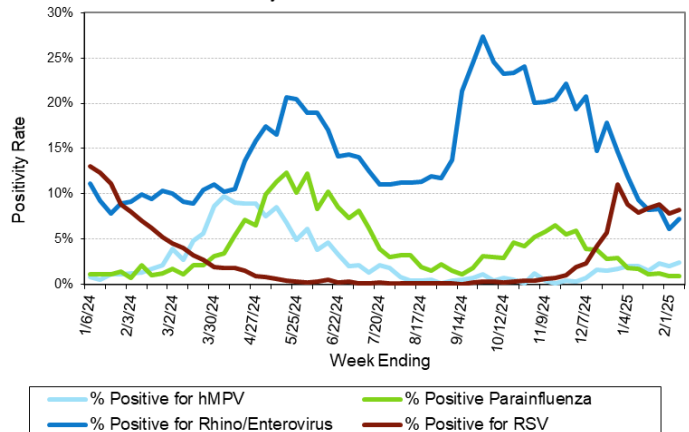
Number Tested and Positivity Rate for **Influenza** by PCR at Wisconsin Laboratories



Number Tested and Positivity Rate for **SARS-CoV-2** by PCR at Wisconsin Laboratories



Positivity Rate of **hMPV, Parainfluenza, Rhino/Enterovirus and RSV** by PCR at Wisconsin Laboratories



Laboratory Surveillance Report

Enteric Pathogens

Week Ending 2/8/25

	# Tested	% Positive
Norovirus***	830	27.5%
<i>Campylobacter</i>	899	1.4%
Sapovirus	713	1.4%
Astrovirus	713	1.0%
<i>Salmonella</i>	899	0.8%
Adenovirus 40/41	713	0.8%
STEC	899	0.7%
<i>Yersinia enterocolitica</i>	800	0.5%
Rotavirus	775	0.5%
<i>Giardia</i>	782	0.5%
<i>Plesiomonas shigelloides</i>	748	0.3%
<i>Cryptosporidium</i>	782	0.3%
<i>Shigella/EIEC</i>	899	0.2%
<i>Vibrio</i>	800	0.1%
<i>Aeromonas</i>	62	0.0%
<i>E. coli</i> 0157	326	0.0%
<i>Cyclospora</i>	713	0.0%
<i>Entamoeba histolytica</i>	776	0.0%

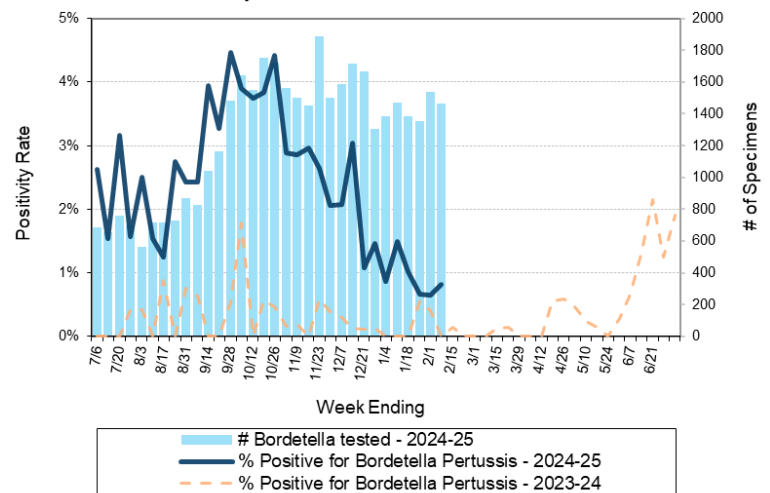
***BioMerieux has announced an increased risk of false positive norovirus results with the BioFire FilmArray GI panel, which may increase the statewide norovirus percent positivity **

Respiratory Pathogens

Week Ending 2/8/25

	# Tested	% Positive
Influenza	22744	38.0%
RSV	19184	8.3%
Rhinovirus/Enterovirus	2447	7.2%
Seasonal coronaviruses	1397	6.7%
SARS-CoV-2	22138	5.6%
Adenovirus	1629	2.6%
Human metapneumovirus	1597	2.4%
Parainfluenza	1561	0.9%
<i>Bordetella pertussis</i>	1464	0.8%

Number Tested and Positivity Rate for *Bordetella pertussis* by PCR at Wisconsin Laboratories



Additional Information



- Additional Information on avian influenza testing and influenza surveillance at WSLH: <https://www.slh.wisc.edu/clinical/diseases/h5n1-highly-pathogenic-avian-influenza-update/>
- Additional information on respiratory pathogens can be found on the DHS website: <https://www.dhs.wisconsin.gov/disease/respiratory.htm>
- Activity graphs for a variety of respiratory pathogens can be found on the DHS Respiratory Illness Dashboard: <https://www.dhs.wisconsin.gov/disease/laboratory-based-data.htm>
- Activity graphs for a variety of gastrointestinal pathogens can be found on the WSLH website: <http://www.slh.wisc.edu/wcln-surveillance/surveillance/gastropathogen-surveillance/>

To subscribe to this report, email WCLN@slh.wisc.edu