

# Laboratory Surveillance Report

**\*\* For a selection of pathogens, participating Wisconsin clinical laboratories voluntarily report to WSLH on a weekly basis the total number of tests performed, and the number of those tests with positive results.**

- To Enhance Surveillance Activities, Please Send:**
- **All Testing Sites:**
    - ◊ **Three influenza-related hospitalizations per week**
    - ◊ **ALL** Influenza A positive specimens:
      - **From patients admitted to the ICU**
      - **With swine, bovine or poultry exposure**
      - With international travel history
      - That fail to subtype as H1 or H3 (Ct <35)
    - ◊ **Up to 5 SARS-CoV-2 positive specimens per week**
    - ◊ **All Enterovirus positive CSF specimens**

**Respiratory Snapshot:**

- Influenza activity is **high** in Wisconsin (19.4%) and nationally (16.1%)
  - **Influenza A** is the dominant strain circulating (80%)
  - Influenza **A(H1N1)pdm09** (58%) and **A(H3N2)** (42%) and are co-circulating this season
- Seasonal coronaviruses (9.6%), Rhinovirus/Enterovirus (7.7%) and RSV (7.0%) activities are **Moderate** in Wisconsin

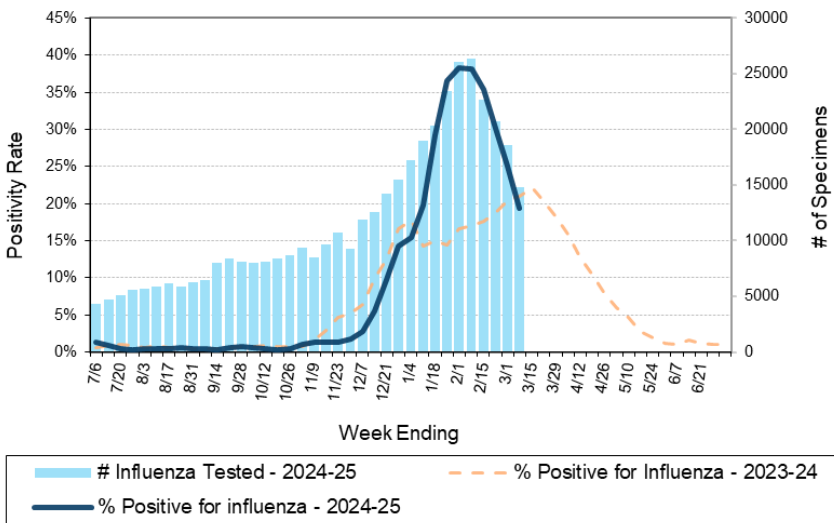
**Enteric Snapshot:**

- Norovirus activity is **high** (21.7%)

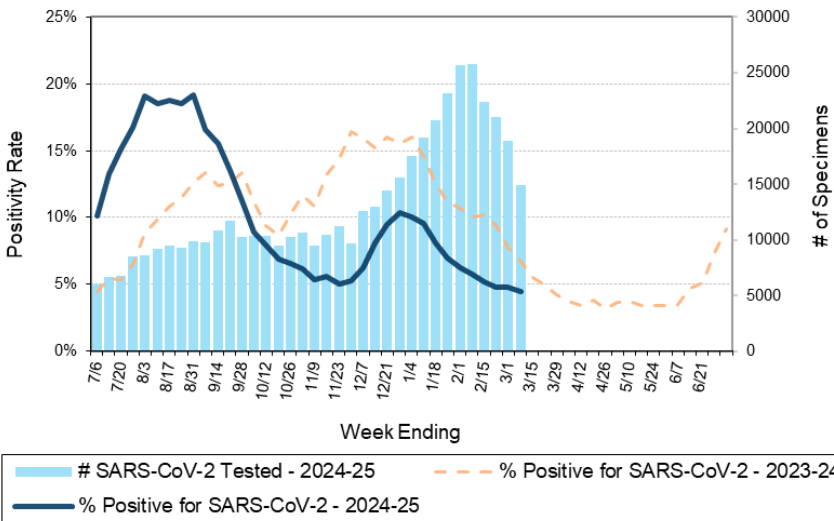
**Other:**

- Group A *Streptococcus* activity in Wisconsin is **high** (18.7%).

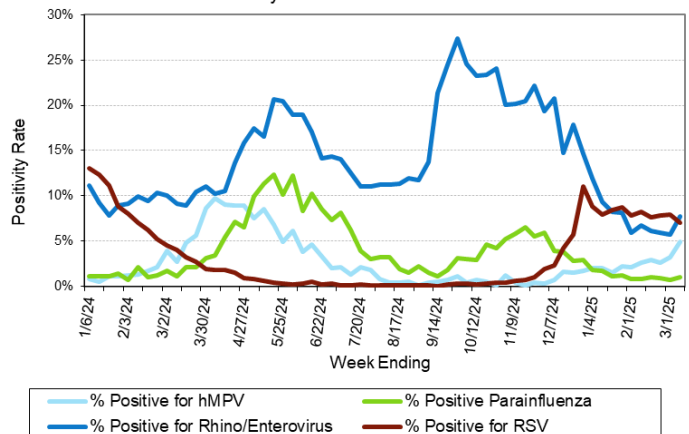
Number Tested and Positivity Rate for **Influenza** by PCR at Wisconsin Laboratories



Number Tested and Positivity Rate for **SARS-CoV-2** by PCR at Wisconsin Laboratories



Positivity Rate of **hMPV, Parainfluenza, Rhino/Enterovirus and RSV** by PCR at Wisconsin Laboratories



# Laboratory Surveillance Report

## Enteric Pathogens

Week Ending 3/8/25

	# Tested	% Positive
Norovirus***	664	21.7%
<i>Campylobacter</i>	734	2.6%
Astrovirus	597	2.5%
Sapovirus	595	2.2%
<i>Salmonella</i>	734	1.6%
Rotavirus	636	1.4%
Adenovirus 40/41	595	1.0%
<i>E. coli</i> 0157	270	0.7%
STEC	734	0.7%
<i>Giardia</i>	649	0.6%
<i>Shigella</i> /EIEC	709	0.4%
<i>Vibrio</i>	661	0.3%
<i>Yersinia enterocolitica</i>	661	0.3%
<i>Cryptosporidium</i>	665	0.3%
<i>Plesiomonas shigelloides</i>	620	0.2%
<i>Cyclospora</i>	595	0.2%
<i>Aeromonas</i>	67	0.0%
<i>Entamoeba histolytica</i>	649	0.0%

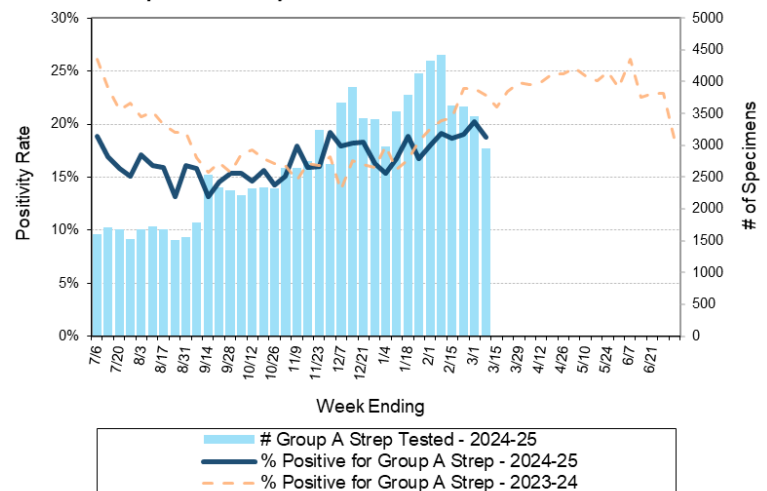
\*\*\*BioMerieux has announced an increased risk of false positive norovirus results with the BioFire FilmArray GI panel, which may increase the statewide norovirus percent positivity \*\*

## Respiratory Pathogens

Week Ending 3/8/25

	# Tested	% Positive
Influenza	14825	19.4% ↓
Seasonal coronaviruses	1071	9.6%
Rhinovirus/Enterovirus	1901	7.7%
RSV	12116	7.0%
Human metapneumovirus	1257	4.9%
SARS-CoV-2	14951	4.5%
Adenovirus	1237	1.8%
Parainfluenza	1214	1.1%
<i>Bordetella pertussis</i>	841	0.8%

Number Tested and Positivity Rate for Group A *Streptococcus* by PCR at Wisconsin Laboratories



## Additional Information

- Additional Information on avian influenza testing and influenza surveillance at WSLH: <https://www.slh.wisc.edu/clinical/diseases/h5n1-highly-pathogenic-avian-influenza-update/>
- Additional information on respiratory pathogens can be found on the DHS website: <https://www.dhs.wisconsin.gov/disease/respiratory.htm>
- Activity graphs for a variety of respiratory pathogens can be found on the DHS Respiratory Illness Dashboard: <https://www.dhs.wisconsin.gov/disease/laboratory-based-data.htm>
- Activity graphs for a variety of gastrointestinal pathogens can be found on the WSLH website: <http://www.slh.wisc.edu/wcln-surveillance/surveillance/gastropathogen-surveillance/>

To subscribe to this report, email [WCLN@slh.wisc.edu](mailto:WCLN@slh.wisc.edu)