

Laboratory Surveillance Report

** For a selection of pathogens, participating Wisconsin clinical laboratories voluntarily report to WSLH on a weekly basis the total number of tests performed, and the number of those tests with positive results.

- To Enhance Surveillance Activities, Please Send:**
- **All Testing Sites:**
 - ◊ **Three influenza-related hospitalizations per week**
 - ◊ **ALL** Influenza A positive specimens:
 - **From patients admitted to the ICU**
 - **With swine, bovine or poultry exposure**
 - **With international travel history**
 - **That fail to subtype as H1 or H3 (Ct <35)**
 - ◊ **Up to 5 SARS-CoV-2 positive specimens per week**
 - ◊ **All Enterovirus positive CSF specimens**

Respiratory Snapshot:

- Influenza activity is **decreasing** in Wisconsin (11.1%) and nationally (10.7%)
 - **Influenza A** is the dominant strain circulating (59.4%)
 - Influenza **A(H1N1)pdm09** (52%) and **A(H3N2)** (48%) and are co-circulating this season
- Seasonal coronaviruses (8.6%) and Rhinovirus/Enterovirus (8.9%) activities are **Moderate** in Wisconsin

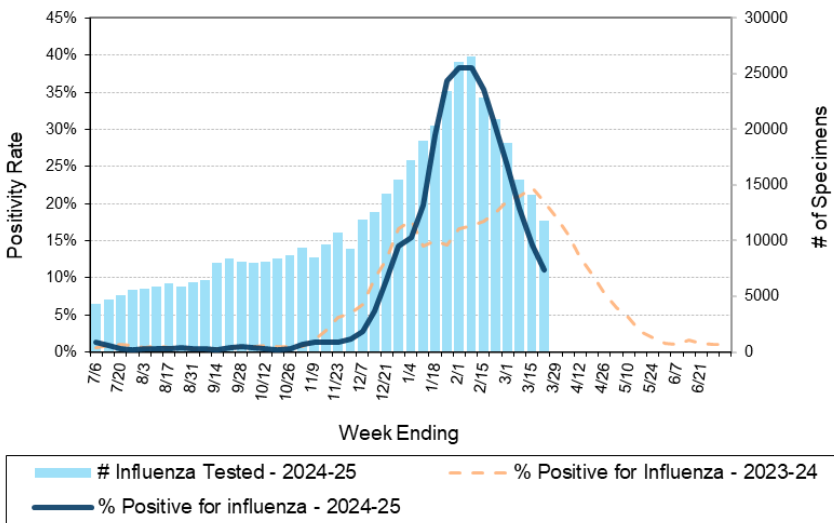
Enteric Snapshot:

- Norovirus activity is **high** (18.3%)

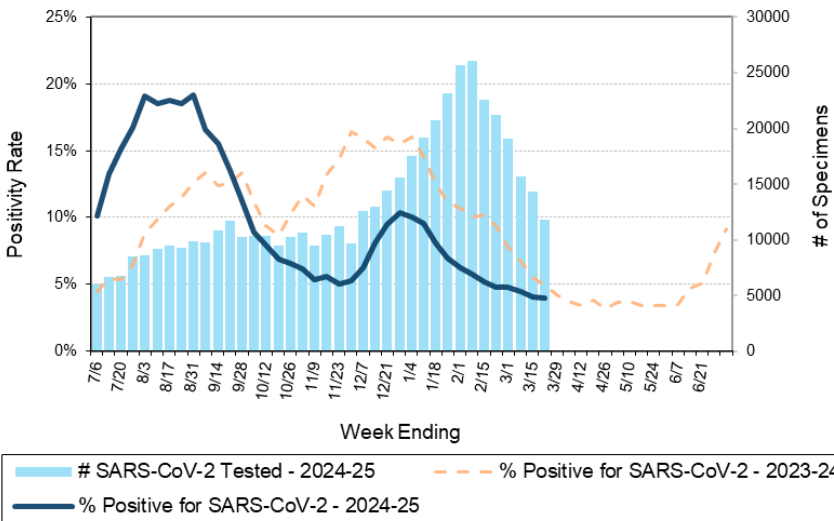
Other:

- Group A *Streptococcus* activity in Wisconsin is **high** (22.3%).

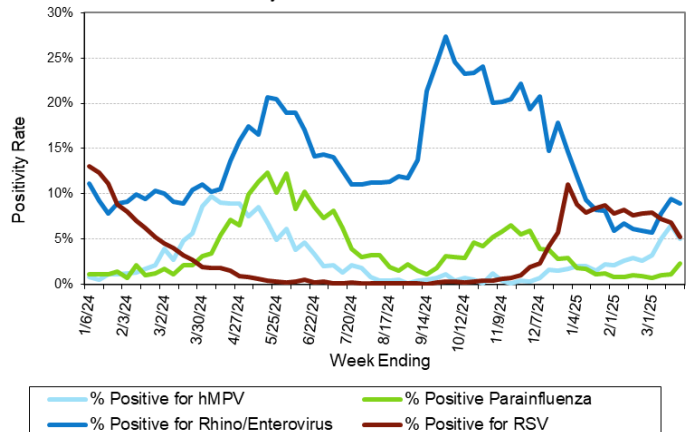
Number Tested and Positivity Rate for **Influenza** by PCR at Wisconsin Laboratories



Number Tested and Positivity Rate for **SARS-CoV-2** by PCR at Wisconsin Laboratories



Positivity Rate of **hMPV, Parainfluenza, Rhino/Enterovirus and RSV** by PCR at Wisconsin Laboratories



Laboratory Surveillance Report

Enteric Pathogens

Week Ending 3/22/25

	# Tested	% Positive
Norovirus***	502	18.3%
Astrovirus	477	3.8%
<i>Campylobacter</i>	620	2.9%
<i>Salmonella</i>	620	1.8%
Rotavirus	510	1.4%
Sapovirus	477	1.3%
<i>Cryptosporidium</i>	560	0.9%
STEC	620	0.6%
<i>Yersinia enterocolitica</i>	535	0.6%
<i>E. coli</i> O157	221	0.5%
<i>Shigella/EIEC</i>	620	0.5%
<i>Entamoeba histolytica</i>	557	0.2%
<i>Giardia</i>	560	0.2%
<i>Aeromonas</i>	56	0.0%
<i>Plesiomonas shigelloides</i>	504	0.0%
<i>Vibrio</i>	535	0.0%
Adenovirus 40/41	477	0.0%
<i>Cyclospora</i>	477	0.0%

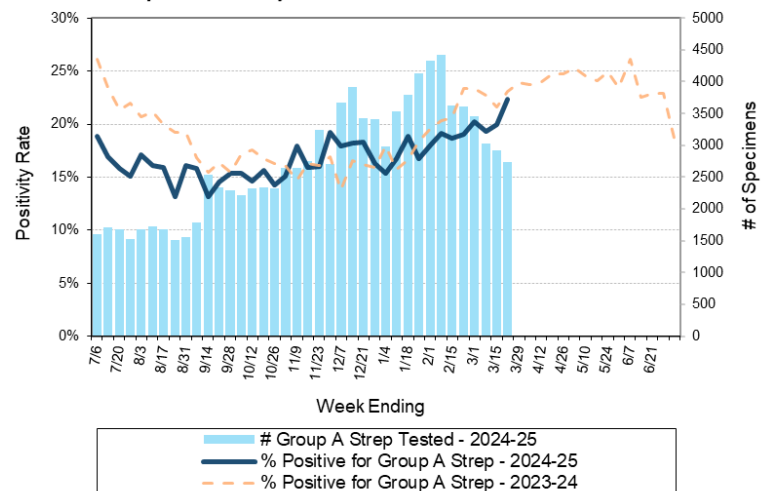
***BioMerieux has announced an increased risk of false positive norovirus results with the BioFire FilmArray GI panel, which may increase the statewide norovirus percent positivity **

Respiratory Pathogens

Week Ending 3/22/25

	# Tested	% Positive
Influenza	11766	11.1%
Rhinovirus/Enterovirus	1489	8.9%
Seasonal coronaviruses	882	8.6%
RSV	12116	5.2%
Human metapneumovirus	1044	5.1%
SARS-CoV-2	11791	4.0%
Parainfluenza	1011	2.4%
Adenovirus	1022	1.9%
<i>Bordetella pertussis</i>	782	1.5%

Number Tested and Positivity Rate for Group A *Streptococcus* by PCR at Wisconsin Laboratories



Additional Information

- Additional Information on avian influenza testing and influenza surveillance at WSLH: <https://www.slh.wisc.edu/clinical/diseases/h5n1-highly-pathogenic-avian-influenza-update/>
- Additional information on respiratory pathogens can be found on the DHS website: <https://www.dhs.wisconsin.gov/disease/respiratory.htm>
- Activity graphs for a variety of respiratory pathogens can be found on the DHS Respiratory Illness Dashboard: <https://www.dhs.wisconsin.gov/disease/laboratory-based-data.htm>
- Activity graphs for a variety of gastrointestinal pathogens can be found on the WSLH website: <http://www.slh.wisc.edu/wcln-surveillance/surveillance/gastropathogen-surveillance/>

To subscribe to this report, email WCLN@slh.wisc.edu